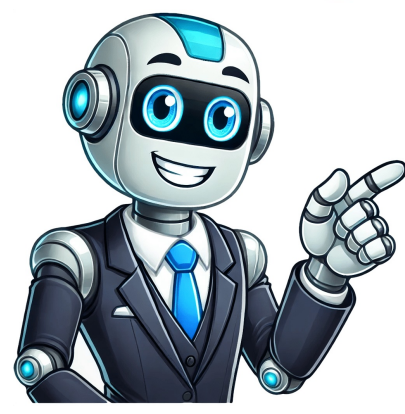


Click to verify



Concentrate vaporizers, also known as dab pens or wax pens, have become increasingly popular among vapers seeking a more potent and flavorful session. Proper usage of these devices is essential to understand as it will maximize efficiency and ensure a satisfying puff. In this Wulf Mods Guide, we'll guide you through the correct steps for using your concentrate vaporizer. From optimizing the heating chamber to ensuring proper airflow, we'll cover everything you need to know to get the most out of your device. Understanding the components of your concentrate vaporizer is the first step. Most dab pens, like the Wulf Mods Orbit or the Evolve Vape, contain a battery, an atomizer or coil, and a mouthpiece. Additionally, some devices may feature adjustable temperature settings for a customized vaping experience. Steps to Properly Using Concentrate Vaporizers: 1. Make Sure Your Battery is Fully Charged: Ensure your vaporizer is adequately charged before use. Most devices come with Micro USB or Type-C charging ports, making it convenient to recharge your battery whenever needed. 2. Load Your Concentrates Properly: Gently remove the mouthpiece and access the heating chamber or coil. Use a dab tool to load a small amount of your chosen concentrate onto the coil. Be mindful not to overfill to prevent any residue or leaks. 3. Turn On the Device: Activate your vaporizer by pressing the power button. Some devices may require multiple clicks for activation. Refer to your vaporizers user manual for full specific instructions. 4. Adjust Temperature Settings (if applicable): If your concentrate vaporizer has adjustable temperature settings, experiment with different temperatures to find the one that suits your preferences. Lower temperatures can preserve flavor, while higher temperatures may produce more vapor. 5. Inhale Gently: Once the device is heated, take a slow and steady inhale. Avoid inhaling too forcefully, as this may disrupt the vaporization process. Find a comfortable rhythm for drawing vapor. 6. Clean Your Vape After Use: Regularly clean the heating chamber and mouthpiece to prevent residue buildup. It is best to always clean or wipe your vaporizer after every session, as this makes your device last longer. Follow the cleaning instructions, and be sure to turn off the device before cleaning. 7. Store Properly: When not in use, store your concentrate vaporizer in a cool and dry place. This ensures the device's longevity and maintains the quality of your concentrates. Tips for the Best Performance: Start with Small Amounts: Begin with a small amount of wax, especially if you're new to using a concentrate vaporizer. You can always add more, but starting small helps avoid wasting your precious concentrates. Never Overheat: Vaping with high temperatures will cause an overflow and affect your vaporizer poorly. Experiment with Temperature: Play around with different temperature settings to find the one that provides the best balance between flavor and vapor production. Understand that at lower settings, your inhales will be subtle and smooth, while higher temperatures may produce denser and more robust puffs. An Overview of Concentrate Vaporizers: Properly using your concentrate vaporizer involves a combination of understanding its components, mastering the steps, and experimenting with settings to tailor the experience to your preferences. With these guidelines, you'll be on your way to enjoying the full potential of your concentrate vaporizer and savoring the rich flavors of your favorite concentrates. At Wulf Mods, we are dedicated to elevating your vaping experience. We strive to provide valuable tips, crucial device maintenance guidance, and a thoughtfully curated collection of vaporizers tailored to suit your individual preferences, whether you prefer dry herbs, concentrates, or oil cartridges. Enhance your vaping sessions by delving into the enlightening content on our Vaporizer Blog. How to Properly Use Your Concentrate Vaporizer | Wulf Mods Welcome to the definitive guide to mastering your Wulf Vape, the pinnacle of modern vaporizer technology. This article is designed to equip you with a thorough understanding of your device, ensuring you achieve the ultimate vaping experience. From basic setup to advanced tips for maintenance and optimal use, this comprehensive guide will walk you through every crucial step. Whether you're a beginner seeking to familiarize yourself with the essentials or an experienced user looking for expert insights, this resource provides the technical knowledge and detailed instructions you need to get the most out of your Wulf Vape. How do I set up my Wulf Mods vaporizer for the first time? Wulf vape instructions: Understanding the components of your Wulf Vape To successfully configure Wulf Mods vaporizer, it is critical to comprehend how the major components function. Your Wulf Vape includes the following parts as the core components: Battery: A Resistant Li-Ion battery is used as the chargeable power source. The majority of Wulf vapes work within the 3.2-volt to 4.2-volt range, so the device heats adequately for vapor generation. Make sure to read the manual for your specific model to understand the battery settings. Atomizer: The atomizer is the component that contains the heating element used to vaporize the materials, including concentrates and dry herbs. Coils have resistance, which is measured in Ohms, including but not limited to 0.5 Ohms to 2.5 Ohms. They are calibrated to the vaporizer's output so that the captured power is balanced. Tank: The part where the loading of the material is performed is referred to as a tank. Make sure to keep a limit on how much you put in because overfilling badly impacts air flow and performance. Mouthpiece: The body that connects with the tank directly where inhalation of vapor occurs. Taste can be affected, so cleaning of this component must be performed regularly. Control Button(s) or LED Screen: Some Wulf vapes possess a singular button that allows control for voltage power and measures battery power, and they are operated through simple push buttons. You can accomplish a flawless initial consultation by identifying and checking each of the components to see if they are in proper working order. Charging your device properly To extend the lifespan of your Wulf Mods vaporizer, proper charging is crucial. To stave off electric surges or compatibility hassles, begin with the manufacturers recommended charging cable and adapter. Most Wulf devices have a charging port that is either Micro USB or USB-C, and the input voltage is generally set at 5V, while the current rating ranges from 1 to 2 A, depending on the model. For detailed charging protocols, refer to your User manual. Make sure to connect your device to a reliable power source. If the power sources are high-wattage wall adapters above 2A, stay away as these can increase battery temperature, which can be damaging in the long run. When charging starts, the LED light indicator or screen may blink or change color. Once the device is fully charged, the indicator will turn solid, or the battery icon will be displayed if it is a digital model. Overcharging your device is not ideal either while most models do have overcharge protection features, constant plugging in can result in wearing out the device in the long run. As soon as your device gives the full charge signal, disconnect it to reap its benefits. These protocols should help ensure optimal device charging performance and safe operation. If something does not seem right, consult the troubleshooting section of your device manual. What are the step-by-step instructions for using a Wulf Flora? Wulf vape instructions: Loading your dry herb or concentrate To avoid accidental triggers from occurring during the process, make sure the device is turned off before loading it this will ensure maximum safety. It is also ideal, in terms of the devices performance, that the chamber is clean and free of residue. Select Material: Make your choice between dry herb or concentrate depending on your preference. For dry herbs, use a grinder to achieve a medium-fine consistency to ensure even heating. If you have concentrates, check for compatibility with the included concentrate pad or the chamber. Seal the Chamber: To prevent leakage or improper flow, replace the chamber lid firmly onto the chamber. Power On: Following the manufacturers instructions, which usually takes from 30 to 60 seconds, turn the device on and allow it to preheat. These steps, combined with the technical requirements, will ensure efficient vaporization and prolong the life of your device. Selecting the right temperature setting To obtain effective vaporization while preserving the active compounds, choosing an ideal temperature setting is key. When using a wide variety of materials, I suggest starting at a temperature range of 350F (177C) to 400F (204C). This range usually suffices for good extraction whilst ensuring vapor production is smooth with minimal chances of byproducts being produced due to higher temperatures. Herbal Material: A range of 370F (188C) to 390F (199C) is ideal for full flavor and potency. Concentrates: Higher temperature ranges of 400F (204 C) to 430F (221 C) are usually better to ensure good vaporization and proper consistency. Low-Temperature Users: For smoother and more flavorful vapor, techniques such as setting the device at 350F (177C) to 360F (182C) produce ideal results. These recommendations are justified by the boiling points of various compounds. Some terpenes, such as myrcene, for instance, evaporate around 334F (168C), which is perfect for preserving aromatic profiles. Cannabinoids such as THC and CBD, on the other hand, take effect with a temperature of 315F (157C) to 428F (220C). One can adjust the temperature range anywhere within this range, depending on personal preference or desired effect. Always make sure, however, to check the specific materials being used with your device for optimum performance and safety. How do I use and maintain the Wulf Recon 4G cartridge vaporizer? Wulf vape instructions: Attaching and using 510 threaded cartridges Here are steps to follow when using 510 threaded cartridges with the Wulf recon 4G cartridge vaporizer. Check Compatibility: Ensure that the cartridge has a 510 thread and is within the resistance range supported by the device (most vaporizers support 1.0 to 3.0). A missing in the bounds cartridge could inflict damage on the device. Install the Cartridge: Thereafter, thread the 510 cartridge on the vaporizers connector port. Be cautious not to over-tighten as it could damage the electrical connection. Turn On the Device: The vaporizer can be turned on by pressing the power for 5 seconds or faster. Please refer to the manual for the correct sequence. Change the Voltage: Change the voltage level that fits the cartridge. Most standard pre-filled cartridges work from 3.3V to 4.2V. Smoother lower boosted lower, flavor-focused experiences, while stronger vapor production boasted higher voltages. Vape responsibly: Press the power button and inhale. Do so softly, and avoid long, forceful draws to prevent overheating. Following these steps and guidelines will help you use the Wulf Recon 4G cartridge vaporizer efficiently and prolong its lifespan. Adjusting voltage settings for optimal performance The voltage settings are very important because they define how the vaping experience will be in terms of flavor as well as vapor. It is very important to set a voltage that will meet your expectations and the set requirements of the cartridge for the Wulf Recon 4G cartridge vaporizer. Low Voltage (3.3V-3.7V): It is mostly used for users who wish to have a smooth hit, and flavor retention is very important to them. Lower volts ensure the coil heats at a moderate rate, which makes it impossible to have damage to sensitive terpene profiles while leaving out a burnt taste. Medium Voltage (3.7V-4.0V): Has the advantage of easy usage because at this level, production of enough vapor and satisfaction in flavour quality are achieved. This setting works well for standard cartridges that operate effectively at moderate heat. High Voltage (4.0V-4.2V): This range of settings provides the highest amount of vapor produced but at the expense of overheating the coil and burning the oil if used excessively. This range is optimally suited to those users who prefer to have dense vapor, the latest features of the coil, and it is advised that users with this voltage is ideal. Always check the cartridge details to make sure that the required voltage set by the manufacturer is not exceeded. Not having too low resistance and too low ranges of ideal voltages will help in making the coil and cartridge last longer while making them perform at their best all through their lifetime. Cleaning and maintaining your Wulf Recon 4G To maximize the lifespan and performance of your Wulf Recon 4G, regular cleaning and maintenance are critical. To clean the device, unplug the cartridge from the battery first to not cause any damage or short circuits. Take a soft wipe that does not have fluff and dampen it with some isopropyl alcohol. Use it to wipe the outside of the device. For the mouthpiece and cartridge region, soak a cotton swab in isopropyl alcohol and use it to scrub any debris subdued inside. Ensure that no liquid gets into the device. While using the device, constantly check the connections. If there is any dirt or oil contamination, as it could prevent an electrical contact, clean them off. If the cartridge gets filled with too much material, warm it a little to unclog it, ensuring you do not exceed the acceptable couple limitations set by the manufacturer, which is provided in your cartridge technical documents. Recommended Cleaning Frequency Clean the device after every 35 uses to ensure no residue build-up occurs. Cleaning Materials Lint-free wipes or cotton swabs with isopropyl alcohol (70%-90%). Battery Safety Avoid placing the battery in extreme heat or overcharging. Overcharging the battery will cause it to start disintegrating earlier than desired. Electric sockets also need to be controlled due to the voltage range specified by the supplier. These practices will ensure optimal performance and longevity for your Wulf Recon 4G. Ensuring proper cleaning and periodic maintenance performs in backing the overall experience of the user as well as the efficiency and reliability of the device. How do I maximize the lifespan of my Wulf Mods device? Wulf vape instructions: Proper storage and handling techniques For Wulf Mods device to sustain its integrity, proper storage and handling practices should be followed by the manufacturers guidelines. Control of Temperature The device should be kept in places where the environment is maintained at a temperature between 2025 degrees Celsius (687 degrees Fahrenheit). Heavy exposure to heat or cold should be avoided as temperatures above 45 degrees Celsius (113 degrees Fahrenheit) or below 0 degrees Celsius (32 degrees Fahrenheit) can compromise battery functionality and damage other electronic components. Humidity Maintenance Areas of storage should have regulated humidity of around 30% and 50% so that condensation and corrosion of inner components are avoided. Physical Damage A protective casing should be employed so that dust, debris, and other impacts of a physical nature do not hinder the device. Avoid placing heavy materials over the device as it can lead to structural deformities. Storage of Battery In case the device is not going to be used for a long time, it should be stored at a level of charge between 40% and 60%. This helps the battery in sustaining its power and stress over time. Avoid Submerging in Liquids Keep the device devoid of any other liquids or water as it can lead to moisture ingress, which can hinder the circuitry. Following these technical instructions will make sure that your Wulf Mods device lives a long and useful life. The preservation of the devices electronic and mechanical parts can be greatly enhanced by handling and storing it correctly. Regular cleaning and maintenance schedule Following a cleaning and maintenance routine will help maintain the performance of your Wulf Mods Device as well as prolong its life. This is a recommended routine to ensure optimal performance: Daily Maintenance After every use, make sure to check the device for any residue or blockage in the air vents. Wipe the exterior surfaces with a soft cloth to remove fingerprints and dust. Weekly Cleaning Clean the removable components thoroughly, i.e., the mouthpiece and tank, with 70% isopropyl alcohol and a microfibre cloth. Allow the parts to dry completely before reassembling. Monthly Inspection Look at critical parts, battery contacts, and internal connections for corrosion and dirt. Clean areas with a cotton swab lightly dipped in isopropyl alcohol. Make sure proper voltage levels, 3.7V nominal for Lithium-Ion Batteries, to ensure smooth performance are present. Quarterly Maintenance Fully disassemble the device to check seals, O-rings, and other wear under components for gashes or damage. Replace any parts that might be worn or damaged. Replace any parts that might be worn or damaged. Lastly, check if the device has any pending firmware updates to ensure that the device works with the latest features. Implementing this schedule will enable you to achieve maximum efficiency and durability with your device while minimizing wear. Each step is grounded in engineering best practices for consumer electronics and adheres to reasonable technical specifications. This will contribute to maintaining its electronic and mechanical integrity over time. Avoiding common use mistakes One of the mistakes users often make is disregarding the needed maintenance, which could lead to lowered performance and a greater likelihood of failure. One example would be infrequent cleaning of contact points, which can lead to low conductivity and faulty operations. The components should be cleaned with 99% or higher isopropyl alcohol because it saves materials while cleaning off residues. Another mistake often made stems from forgetting to check the voltage of the batteries. Always remember that the voltage should correspond to certain standards, like 3.7V nominal for lithium-ion batteries with an operational window of 3.0 volts to 4.2 volts. Anything outside these would cause the battery to be damaged or, worse, present safety hazards like overheating. Improper reassembly after routine quarterly maintenance is another concern that can result in the device being unusable. For one, missing the inspection and replacement of O-rings and seals would allow the device to operate but leak in the process. Check all replacement parts against the manufacturers requirements to ensure that proper parts have been used. Neglecting the need to update the firmware might reduce the usability of a device. Quite simply, updates are meant to be checked with the manufacturer to have any new features and bugs dealt with to ensure better security and performance. What are the different vaping modes available on Wulf vaporizers? Wulf vape instructions: Exploring voltage settings for various cartridges Understanding how different cartridges work with different voltages is crucial to keeping both the device and the material in use functional for an extended period. Cartridges are made to work at their optimum in specific voltage ranges, which are primarily set by the type of materials being used, whether they are oils, waxes, or dry materials, and the coil resistance in the cartridge. When it comes to oil cartridges, a lower voltage setting, clocking in from 2.4V to 3.2V, is recommended. These settings help to produce vapor without overheating the oil, which ensures flavor perfection. On the other hand, wax-based cartridges require a higher voltage, between 3.0V and 4.0V, which provides the heat needed for vaporization. As for dry materials, if the device supports variable voltage, they might need to be set above 4.0V. This is, however, dependent on the device. Material Type: Oils (2.4V-3.2V), waxes (3.0V-4.0V), and dry materials (4.0V+ if applicable). Coil Resistance: Lower resistive (sub-ohm coils) generally prefer the voltage settings to be lower so that there is no overheating, while higher resistance coils tend to require higher voltage. Battery Specifications: Check the ability of the devices battery to provide the needed output at desired voltage levels. Power supplied in proportion to the capacity and the demand on the battery ensures that it works uninterrupted. Manufacturer Recommendations: It is important to inspect the cartridge or device before use to adhere to specific requirements for the optimal voltage to eliminate safety concerns. To increase the efficiency of your vaping experience without risking damage to the device and cartridge, it is advisable to use low voltage settings first and slowly increase them to the optimal preference and materials. Using specialized modes like the Wulf Razr The Wulf Razr incorporates technologically advanced modes that allow users to achieve their unique desired outcomes. This is done by adjusting the voltage range based on the material type being used. For example: Oils: Voltage range between 2.4V-3.2V to avoid overheating while ensuring smooth vapor production. Waxes: Performs at much higher volts, usually between 3.0V-4.0V to maintain appropriate power and consistency. Dry Materials: Uses a more powerful voltage, best set at a little over 4.0V for effective and even heating. Important points also include the coil resistance within the cartridge. For low-resistance (sub-ohm) coils, its best to keep the voltage low to avoid chances of burning the coil out. Low-resistance coils do the opposite, where more voltage is needed to be effective. To ensure there is no damage, its important to go step by step. Starting with the lowest recommended voltage, then gradually increasing it while maintaining it for a short period. This helps in understanding the device's response to different voltages and ensures that the device is not being pushed beyond its limits. The Wulf Razr also offers a "Lock" feature, which allows users to lock the battery and cause the device to stop working. Following the guidelines set by the manufacturer is essential to ensure that every cartridge gets the right amount of performance for continuous use. With the Wulf Razr, I start with the material type, change the voltage stepwise, and observe the performance, making sure everything is safe and efficient. Reference sources Electronic cigarette battery charger (inhalation device) Frequently Asked Questions (FAQs) Q: How do I activate my Wulf Vape? A: To activate your Wulf Vape, press the power button 5 times in a row. The battery light will flash to indicate its turned on. Remember, the same process is used to turn off the device for safe storage. Q: What does it mean when the battery light flashes? A: When the battery light flashes, it typically indicates a low-battery warning. Its time to recharge your Wulf Vape to ensure optimal performance. You can charge it using a standard USB charger or even a power bank for on-the-go convenience. Q: Can I charge my Wulf Vape with a power bank? A: Yes, you can charge your Wulf Vape with a power bank. This is especially useful when youre out and about. Just make sure the power bank outputs at 5V or higher for safe and efficient charging. Q: How do I use the Wulf Mods Uni? A: To use the Wulf Mods Uni, first insert your cartridge into the adjustable chamber. Press the power button 5 times to turn it on. Then, press the button twice to activate the pre-heat function, or press and hold while inhaling for manual operation. The Uni is designed for easy use with various cartridge sizes. Q: Is it safe to overcharge or use my Wulf Vape while charging? A: Its not recommended to overcharge or use your Wulf Vape while charging. Most models have built-in overcharge protection, but its best to unplug once fully charged. For safety, always refer to the user manual for specific instructions on charging and usage. Q: Where can I buy Wulf Mods and cartridge vaporizers online? A: You can buy Wulf Mods and cartridge vaporizers online at the official Wulf Mods website. They offer a wide range of products, including the popular Wulf Mods Recon cartridge vaporizer. The site provides safe, secure shopping and trustworthy customer service. Q: What makes Wulf Mods stand out from other vaporizer brands? A: Wulf Mods is known for its premium craftsmanship and user-friendly designs. Their products, like the Wulf Mods Recon and Uni, offer innovative features and reliable performance. The brand also prides itself on excellent customer service and a user-friendly website for easy ordering. Q: What general information should I know before using a Wulf Vape? A: Before using a Wulf Vape, its important to familiarize yourself with the devices features and safety precautions. Always start with a fully charged battery, use compatible cartridges, and follow the manufacturers instructions. If youre new to vaping, start with lower settings and gradually adjust to find your preferred experience. The world of vaping has undergone a significant transformation in recent years, with the rise of dry herb vaporizers becoming increasingly popular. Among the many options available, the Wulf Dry Herb Vaporizer has gained a reputation for its exceptional performance, ease of use, and durability. However, with so many features and settings to navigate, it can be overwhelming for new users to get started. In this comprehensive guide, we will delve into the world of Wulf Dry Herb Vaporizers, exploring the ins and outs of how to use this innovative device to its full potential. Getting Started with the Wulf Dry Herb Vaporizer Before you begin using your Wulf Dry Herb Vaporizer, its essential to familiarize yourself with its components and settings. The device comes with a user manual, which provides detailed instructions on how to assemble and disassemble the unit, as well as information on how to adjust the temperature and other settings. Components and Accessories The Wulf Dry Herb Vaporizer consists of several key components, including the main unit, the mouthpiece, and the herb chamber. The main unit houses the heating element, temperature control, and battery, while the mouthpiece is designed for comfortable vaping. The herb chamber is where you place your dry herb, and its essential to ensure its properly loaded and secured before use. The device also comes with a few accessories, including a cleaning brush, a replacement mouthpiece, and a USB charging cable. Its crucial to keep the device clean and well-maintained to ensure optimal performance and longevity. Loading the Herb Chamber Loading the herb chamber is a crucial step in the vaping process. To do so, simply place the desired amount of dry herb into the chamber, making sure to leave enough space at the top for the herb to expand during use. Its essential to pack the herb tightly but not too tightly, as this can affect the airflow and flavor. Once the herb chamber is loaded, ensure its securely locked into place to prevent any accidental openings or spills during use. Temperature Control and Settings The Wulf Dry Herb Vaporizer features advanced temperature control, allowing you to customize the heat to your liking. The device comes with a range of pre-set temperatures, from 300F to 420F, which can be adjusted using the included remote control or the devices touchscreen interface. (See Also: What Herbs With Bee? Flavor Pairings Unveiled!) Its essential to experiment with different temperatures to find the one that works best for you. Some users prefer a lower temperature for a more subtle range of flavor, while others prefer a higher temperature for a more intense experience. Using the Remote Control The Wulf Dry Herb Vaporizer comes with a remote control that allows you to adjust the temperature, turn the device on and off, and monitor the battery life. The remote control is convenient and easy to use, making it simple to navigate the devices settings without having to physically interact with it. Using the Wulf Dry Herb Vaporizer Once youve loaded the herb chamber and adjusted the temperature, its time to start using the Wulf Dry Herb Vaporizer. Heres a step-by-step guide on how to use the device: Step 1: Turn On the Device To turn on the device, simply press the power button located on the remote control or the devices touchscreen interface. The device will begin to heat up, and youll hear a gentle humming noise. Step 2: Inhale the Vapor Once the device is heated, place the mouthpiece in your mouth and inhale slowly. The vapor will be released into your mouth, and you can adjust the airflow by adjusting the mouthpiece. Step 3: Monitor the Temperature As you vape, monitor the temperature to ensure it remains within your desired range. You can adjust the temperature using the remote control or the devices touchscreen interface. (See Also: What Is the Difference Between Herbs and Shrubs? Growing In Your Garden) Q: How do I store the Wulf Vape Dry Herb Vaporizer? A: To store the Wulf Vape Dry Herb Vaporizer, simply place it in a cool, dry place away from direct sunlight. Avoid storing the device in extreme temperatures or humid environments, as this may affect its performance and longevity. Q: How do I troubleshoot common issues with the Wulf Vape Dry Herb Vaporizer? A: To troubleshoot common issues with the Wulf Vape Dry Herb Vaporizer, simply refer to the user manual or contact the manufacturers customer support team for assistance. Q: Can I use the Wulf Dry Herb Vaporizer with a power adapter? A: Yes, the Wulf Dry Herb Vaporizer can be used with a power adapter, allowing you to charge the device from a wall outlet. However, its essential to ensure the adapter is compatible with the device and follows the manufacturers guidelines for use. Q: Is the Wulf Dry Herb Vaporizer safe to use? A: The Wulf Dry Herb Vaporizer is designed with safety in mind, featuring a range of safety features, including automatic shut-off, overheat protection, and a secure herb chamber. However, its essential to use the device responsibly and follow the manufacturers guidelines for use to ensure a safe and enjoyable vaping experience. Free shipping anywhere in Canada Buy in Canadian dollars Order ships from our warehouses in Canada - no delays at customs Visit Canadian Store No thanks, stay on the US store Home / Blog / Vaporizer Manuals - PDF Are you at least 21 years old? Please confirm your age NO YES As the vaping industry continues to evolve, the demand for innovative and effective dry herb vaporizers has never been higher. With the rise of cannabis legalization and the increasing popularity of vaping, dry herb vaporizers have become a staple in many households. Among the numerous options available, the Wulf Vape Dry Herb Vaporizer stands out for its exceptional performance, durability, and user-friendly interface. In this comprehensive guide, we will delve into the world of dry herb vaporizers and provide a step-by-step tutorial on how to use the Wulf Vape Dry Herb Vaporizer to its full potential. Understanding the Wulf Vape Dry Herb Vaporizer The Wulf Vape Dry Herb Vaporizer is a portable, compact device designed for vaping dry herbs. It features a sleek and modern design, making it easy to carry and use on-the-go. The device is powered by a rechargeable battery, which provides up to 10 hours of continuous use. The Wulf Vape Dry Herb Vaporizer is also equipped with a ceramic heating element, which ensures a smooth and even heat distribution, resulting in a more flavorful and aromatic vaping experience. Key Features of the Wulf Vape Dry Herb Vaporizer Portability: The Wulf Vape Dry Herb Vaporizer is designed to be portable and compact, making it easy to carry and use on-the-go. Ceramic Heating Element: The device features a ceramic heating element, which ensures a smooth and even heat distribution, resulting in a more flavorful and aromatic vaping experience. Rechargeable Battery: The Wulf Vape Dry Herb Vaporizer is powered by a rechargeable battery, which provides up to 10 hours of continuous use. Easy-to-Use: The device features a user-friendly interface, making it easy to operate and clean. Preparing Your Dry Herb for Vaping Before using the Wulf Vape Dry Herb Vaporizer, it is essential to prepare your dry herb for vaping. Here are some steps to follow: Step 1: Grind Your Dry Herb Grinding your dry herb is crucial for achieving the perfect vaporization. You can use a grinder or a mortar and pestle to grind your dry herb into a fine consistency. This will ensure that your dry herb is evenly heated and vaporized. Step 2: Load Your Dry Herb Once your dry herb is ground, you can load it into the Wulf Vape Dry Herb Vaporizer. Simply place the ground dry herb into the chamber, making sure to leave enough space for the heating element to move freely. Step 3: Set Your Temperature The Wulf Vape Dry Herb Vaporizer features a temperature control system, allowing you to set the perfect temperature for your dry herb. You can choose from a range of temperatures, from 300F to 420F. It is essential to set the temperature according to the type of dry herb you are using, as this will affect the flavor and potency of the vapor. Vaping with the Wulf Vape Dry Herb Vaporizer Once you have prepared your dry herb and set the temperature, you can start vaping with the Wulf Vape Dry Herb Vaporizer. Heres a step-by-step guide on how to vape with the device: (See Also: How to Quickly Infuse Oil with Herbs? Easy Tips) Step 1: Turn On the Device To turn on the Wulf Vape Dry Herb Vaporizer, simply press the power button located on the top of the device. The device will start to heat up, and the LED light will turn blue. Step 2: Inhale the Vapor Once the device is heated up, you can inhale the vapor through the mouthpiece. The vapor will be released into your mouth, and you can adjust the airflow by adjusting the mouthpiece. Step 3: Monitor the Temperature As you vape, monitor the temperature to ensure it remains within your desired range. You can adjust the temperature using the remote control or the devices touchscreen interface. (See Also: What Is the Difference Between Herbs and Shrubs? Growing In Your Garden) Q: How do I clean the Wulf Vape Dry Herb Vaporizer? A: To clean the Wulf Vape Dry Herb Vaporizer, simply wipe the chamber, mouthpiece, and heating element with a soft cloth and a mild soap. Rinse the mouthpiece with warm water and a mild soap. Avoid using harsh chemicals or abrasive materials, as this may damage the device. Q: How can I adjust the temperature on the Wulf Vape Dry Herb Vaporizer? A: To adjust the temperature on the Wulf Vape Dry Herb Vaporizer, simply press the temperature control button, which is located on the side of the device. The device will display the current temperature on the LED screen. Q: How long does the battery last on the Wulf Vape Dry Herb Vaporizer? A: The battery life of the Wulf Vape Dry Herb Vaporizer varies depending on usage, but on average, it can last for up to 10 hours of continuous use. Q: How do I troubleshoot common issues with the Wulf Vape Dry Herb Vaporizer? A: To troubleshoot common issues with the Wulf Vape Dry Herb Vaporizer, simply refer to the user manual or contact the manufacturers customer support team for assistance. Common issues may include faulty temperature control, clogged chamber, or malfunctioning heating element. By following the troubleshooting guide, you can resolve common issues and ensure optimal performance of the device. Q: Is the Wulf Vape Dry Herb Vaporizer safe to use? A: Yes, the Wulf Vape Dry Herb Vaporizer is safe to use when used properly. However, it is essential to follow the manufacturers instructions and guidelines to ensure optimal performance and safety. Additionally, always use the device in a well-ventilated area and avoid using it near open flames or sparks. The Yocan Wulf Flora Dry Herb Vaporizer is an innovative device designed for dry herb enthusiasts looking for a unique and extraordinary vaping experience. This manual provides detailed instructions on how to operate and maintain your vaporizer, ensuring an optimal session every time. Take the USB Type-C charging cable included in the box. Connect it to the charging port located at the bottom of the battery. Obtain a compatible wall adapter and plug it into a wall socket. Note: Avoid charging with a powerbank that outputs five volts or higher. Charging in a car or overcharging can damage the battery. Ensure the battery is fully charged. Press the circular power button located above the five OLED indicators five times rapidly to turn the device on or off. Grind your selected herbs. Remove the magnetic mouthpiece by pulling it away from the base. Load your dry herbs into the herb chamber. Replace the magnetic mouthpiece onto the body. Ensure the device is powered on by pressing the power button five times rapidly. Press the power button two times to toggle through the five preset temperature settings: 365F (One light) 374F (Two lights) 392F (Three lights) 410F (Four lights) 428F (Five lights) Note: The device will vibrate when the selected temperature is reached. Ensure the device is fully charged and loaded with dry herbs. Select your preferred temperature setting. Allow the device to heat up to the selected temperature. Inhale the vapors. Stir the material occasionally with the included tool to prevent burning. Ensure the device is powered off. Remove the magnetic mouthpiece. Use the included brush to clean the herb chamber. Wipe the anodized aluminum body with a dry cloth or paper towel. Avoid draining the battery if storing for a long period. Wulf Mods Flora Premium Dry Herb Vaporizer Manual How to Use Wulf Flora Dry Herb Vaporizer: Now, lets get to the main question How to use the Wulf Flora Dry Herb Vaporizer? Follow these step-by-step instructions to maximize your vaping experience: Step 1: Charge the Device Make sure your Wulf Flora is fully charged before use. Connect the included USB charger to the device and plug it into a power source. The LED indicator will display the charging status, and when fully charged, its ready to be used. Step 2: Load Your Dry Herbs Remove the mouthpiece to expose the ceramic heating chamber. Grind your dry herbs to a medium-fine consistency and place them into the chamber. Be careful not to over-pack it to allow for proper airflow. Step 3: Power On and Set Temperature Press the power button five times rapidly to turn on the device. The LED screen will activate, and you can adjust the temperature using the up and down buttons. Set it to your desired temperature, typically between 350F and 390F for most dry herbs. Step 4: Start Vaping Once the temperature is set, press and hold the power button to start heating the chamber. Wait for the device to reach the desired temperature. The LED screen will show the temperature rising in real-time. Once reached, take slow, steady draws from the mouthpiece to enjoy the flavorful vapor. Step 5: Cleaning and Maintenance To ensure optimal performance, regularly clean your Wulf Flora Dry Herb Vaporizer. Use the included cleaning brush to remove any residue from the heating chamber and mouthpiece. For a deeper clean, you can soak the detachable parts in isopropyl alcohol and rinse thoroughly. Step 6: How long does the battery last on the Wulf Flora? The battery life of the Wulf Flora varies depending on usage, but on average, it can last for up to 10 hours of continuous use. Step 7: How long does it take for the Wulf Flora to heat up? The heating time of the Wulf Flora may vary based on the temperature setting, but it typically takes around 30 to 45 seconds to reach the desired temperature. Step 8: Can I replace the mouthpiece on the Wulf Flora? Yes, the mouthpiece on the Wulf Flora is detachable and replaceable. You can purchase spare mouthpieces directly from the manufacturer or authorized retailers. Step 9: Is the Wulf Flora compatible with smartphone apps? No, the Wulf Flora does not have smartphone app compatibility. It can be operated solely through the devices buttons and LED screen. Step 10: Can I adjust the airflow on the Wulf Flora? The Wulf Floras airflow is not adjustable. It is designed to deliver a balanced vaping experience without manual airflow control. Step 11: What is the warranty on the Wulf Flora? The Wulf Flora comes with a limited warranty from the manufacturer. The duration and terms of the warranty may vary, so its advisable to check the documentation or contact the manufacturer for detailed information. Step 12: Can I use the Wulf Flora in cold temperatures? Extreme cold temperatures may affect the performance of the Wulf Flora. It is recommended to avoid using the device in freezing temperatures or keep it warm before use for optimal results. Conclusion The Wulf Flora Dry Herb Vaporizer offers a premium vaping experience with its impressive features and sleek design. By following the simple instructions provided, you can enjoy the full potential of this remarkable device. Remember to also take care of regular cleaning and maintenance to ensure prolonged usage and impeccable flavor. Get ready to embark on a vaping journey like no other with the Wulf Flora Dry Herb Vaporizer. Chefs Resource How to use wulf flora dry herb vaporizer? Related Reads The Wulf Mods Flora Dry Herb Vaporizer is a new botanical vaporizer from Wulf Mods, a vaporizer company that has closely worked with Yocan on several collaborative pieces including the Wulf Mods Evolve Plus XL Duo 2-in-1 Vaporizer Kit, the Yocan Evolve Wulf Mxxx3 3 in 1 Vaporizer, the Wulf Mods Art Knife Kit, and the Yocan Kodo Knife by Wulf Mods. Designed for dry herb consumers, the Wulf Mods Flora Dry Herb Vaporizer was built specifically for modern-day stoners looking to get the best out of their materials. Interested to find out just how the Wulf Mods Flora Dry Herb Vaporizer can change your vape game? Check out these unique features. Anodized Aluminum Housing The Wulf Mods Flora Dry Herb Vaporizer is made with an anodized aluminum body, which protects the dry herb vape from minor damages due to falls and bumps. Compared to devices built with cheap plastic bodies, the Wulf Mods Flora Dry Herb Vaporizer can definitely withstand the test of time while still looking good at the same time. Further, the aluminum housing of the Wulf Mods Flora Dry Herb Vaporizer makes it more lightweight compared to its scantly-made counterparts. Therefore, it suits not only those who prefer to consume their select botanical plant matters at home, but also those who like to vaporize flowers and dry herbs while theyre out and about. Another benefit of the Wulf Mods Flora Dry Herb Vaporizers anodized aluminum body is that it gives the device a premium look. Speaking of which, the Wulf Mods Flora Dry Herb Vaporizer is available in various finishes such as Wulf Mods iconic spattered paint or the rainbow-like Full Color hue. Detachable Ceramic Filter The Wulf Mods Flora Dry Herb Vaporizer does come with a detachable ceramic filter, which ensures that you dont inhale fine particles of your ground herb. Actually, using ceramic as a filter is a great move from Wulf Mods as it ensures that the filter will not heat quickly, causing the breakdown of some of the Wulf Mods Flora Dry Herb Vaporizers components. Those who have been vaping herbs and dabbing wax concentrates know the benefit of using ceramic. Since it does not transfer heat as quickly as quartz, ceramic components are usually great in preserving the overall quality of various materials without reaching the point of combustion. That said, the ceramic filter also helps in making sure that your botanicals do not burn, saving you from inhaling contaminated vapor. After all, a vaporizers main purpose is to allow its owners to get the benefits of herbs and other natural materials without their negative byproducts. Magnetic Mouthpiece The Wulf Mods Flora Dry Herb Vaporizer features a magnetic mouthpiece, which makes operation and maintenance a breeze. First, having a magnetic mouthpiece means that having to remove and replace the cap is accomplished faster when compared to a portable dry herb vaporizer with threaded connections. All there is to do is to pull the mouthpiece away from the body to sever the connection. Conversely, one must simply draw the mouthpiece near the body to allow both components to connect. Further, the connection is also strong that the mouthpiece does not get easily knocked out of place, even when kept inside your pocket or in a bag. Moreover, the threads of metal and plastic mouthpieces tend to loosen overtime, and when they do, they are rendered useless. A magnetic mouthpiece, on the other hand, will prove to last longer than its threaded counterpart. The second benefit of using a magnetic mouthpiece is that it is easier to clean. See, the grooves on a threaded connection can capture small herbs it can even be a place where residual waste accumulates. Meanwhile, a mouthpiece with magnetic connections only has a smooth surface, which means that the chances of fine ground herbs and residual material getting trapped in this part of the vaporizer is significantly reduced. Therefore, having a magnetic mouthpiece means that you can be assured that there will be very little to no dirt and residue on your vaporizer. Instead of using a device which can cause unwanted microorganisms to develop, you can enjoy using a dry herb vape that always cleans and is safe. And while were on the topic of cleanliness, the Wulf Mods Flora Dry Herb Vaporizer can easily be cleaned by wiping the magnetic connections. Would you spend your precious time scrubbing threaded connections? 1,000mAh Battery Wulf Mods fitted the Wulf Mods Flora Dry Herb Vaporizer a powerful 1,000mAh battery. This means that it has the capability to last longer than other vaporizers on the market in just a single charge. Of course, depending on your usage habit, the Wulf Mods Flora Dry Herb Vaporizer can either last you a full day or more. Whats impressive is that despite the high-capacity battery, the Wulf Mods Flora Dry Herb Vaporizer is still small enough to be carried comfortably. Its measurements let you keep it in your bag, your pocket, and even walk through tow with it on the palm of your hands. The battery can be charged using a USB Type-C charger and charging cable. This technology means that the battery can be charged faster and its power delivery can be more stable. Five Preset Temperature Profiles Its very common for vaporizer companies to equip their devices with three temperature settings. Actually, its kind of the industry standard. However, Wulf Mods wanted to give their customers better dry herb vaporizers, slapped the Wulf Mods Flora Dry Herb Vaporizer with five preset voltage settings. The lowest temperature profile is 356 degrees Fahrenheit (F), which is perfect for extracting the flavonoids of your favorite botanical plant matter. The temperature settings go up and as high as 428 degrees F, which on the other hand, is great for extracting potent cannabinoids from your herbs without reaching the point of combustion. Each of the five preset temperature settings are represented by OLED lights, which shine bright even in broad daylight.

Wulf flora vaporizer instructions. Dry herb vaporizer good or bad. Wulf flora user manual. Wulf flora dry herb vaporizer how to use. What is a dry herb vaporizer used for. Dry herb vaporizer australia reviews. Wulf mods flora dry herb vaporizer instructions. G dry herb vaporizer how to use.