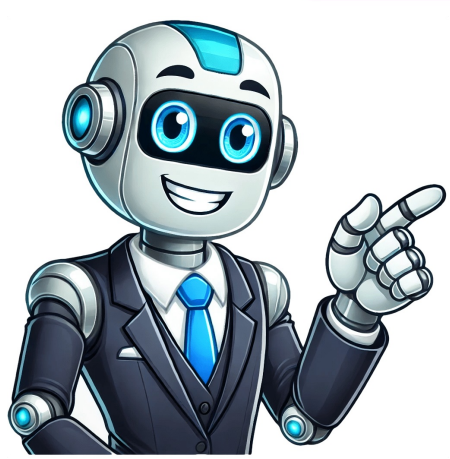


Continue





You can configure the plant and movement types for shelf life expiration check in the Logistics > General > Batch Management > Shelf Life Expiration Date path. Refer to the IMG documentation for possible settings, which include options for plant and movement type. It's essential to review whether any workaround logic might restrict the check to certain materials. In SAP Extended Warehouse Management (EWM), the Expiration Date check is performed for non-batch managed products during Inbound Delivery processing. The "Check BBD/SLED" setting in Customizing activity: Extended Warehouse Management > Cross-Process Settings > Batch Management > Define Setting for Delivery - Warehouse Request can be set to either "Lock Item, Manual Release Allowed" or "Lock Item, Manual Release Not Allowed". The system calculates the total remaining shelf life of a batch by subtracting the current date from the expiration date. To view this information, select the corresponding radio button, which also displays materials with no stock. Alternatively, choose to display the remaining shelf life in days. In the report settings, enter the material code, plant, and storage location as desired. Optionally, specify a batch number or minimum remaining shelf life for goods receipt acceptance. The system can show the remaining shelf life of batches in the warehouse or the total remaining shelf life. However, managing stock by shelf life, such as prioritizing older items, requires batch management. Without it, checking manufacturing dates or shelf life expiration dates is limited, and separating stock by shelf life is not possible in SAP, even with warehouse management.

How to check batch expiry date in sap. How to check po expiry date in sap. How to find expiration date in sap. How to check product expiry date in sap. Expiration date sap. Sap check expiration date. How do i check my expiry date. How to check expiry date of product. How to check sap license expiration date. How to check material expiry date in sap.