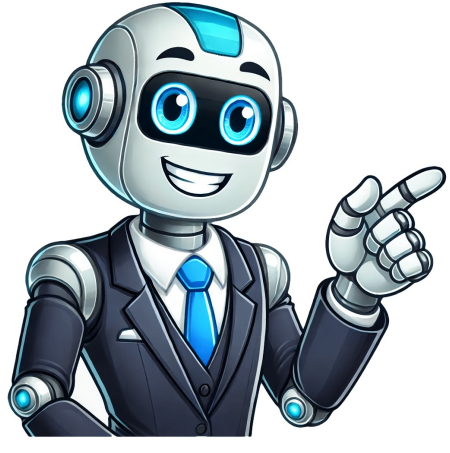


Continue





























ELS, Inc. (877) 233-7833 | © 2005-2025 ELS, Inc. All Rights Reserved. Welcome to the myELSONline.com website which integrates the Early Learning Scale Pre-K assessment instrument with a powerful online observation, documentation, assessment and reporting system. This website harnesses the power of tablet, smartphone and laptop devices as well as cloud-based database and reporting tools to help teachers efficiently document student performance and create valid and reliable evaluations of student progress.For more information and to open a 60 day trial account, send a request to els-support@cntrmail.org or call 224-366-8581. ELS Brochure Welcome to Essential Letters and Sounds (ELS). ELS is a synthetic phonics programme which some schools use to help children learn to read in Reception and Key Stage 1 (Primary 1 to 3). If you’ve heard the term ELS used by teachers at your child’s school, the chances are they are using ELS to help your little one as they learn to read. Here you can find more information on what ELS is and how you can support your child at home. What is Synthetic Phonics? Synthetic phonics is a way of teaching children to read. It teaches children how sounds are represented by written letters. Children are taught to read words by blending these sounds together to make words. For example, they will be taught that the letters ‘m-a-t’ blend together to make ‘mat’. A synthetic phonics programme, such as ELS, is a structure for teaching these sounds in a certain order to build up children’s learning gradually. It is used daily during Reception and Year 1 to teach all the sounds in the English language. How is ELS taught in schools? With ELS, there is a daily phonics lesson where the teacher teaches a new sound, or reviews sounds learned earlier in the week. This is shown to the class on the whiteboard. Children learn the letters that represent the sounds. They are then asked to read words and sentences with the new sounds in. Children will also practise writing the letters that represent the sounds. What order are the sounds taught in? New sounds are taught each day, with some review days and weeks to help children practise what they’ve learned. Click below to reveal the sounds your child will learn in ELS. Home > Connecticut > South Windsor Looking for ESL Classes in South Windsor? English schools teach reading, writing, listening, and speaking skills which are vital in studying the English language. Our website makes it easy to find and get in touch with non-profits that offer English lessons in your city.ESL Classes in South Windsor, CT are normally offered by local organizations like: Freeport Public School Adult Education 235 N OCEAN AVE Freeport, NY 11520 Phone: (516) 867-5314 97.00 miles away Schenectady County 99 Clinton Street Schenectady, NY 12305 Phone: (518) 452-3382 97.05 miles away Family Literacy/ESOL Program 50 East 168th Street WHEDCO/Urban Horizons Bronx, NY 10452 Phone: (212) 725-9200 98.21 miles away OACE - School 5 212 West 120th Street New York, NY 10025 Phone: (212) 666-1919 101.84 miles away CT State Capital’s ESOL Program is designed to enable non-native English-speaking students to develop and synthesize the core English language proficiency skills necessary for success towards attaining a college degree or certificate. As a reflection of CT State Capital’s mission: The ESOL Program is committed to providing access to higher education through meeting the English language learning needs of the diverse residents of Greater Hartford. The five-level ESOL curriculum consists of one six-credit integrated skills course per level. The academically-focused courses integrate speaking, listening, reading and writing to facilitate student learning. Online computer-assisted language learning, which can be accessed anytime and anywhere, has been integrated into each level. Levels two through five (ESOL 1202, ESOL 1302, ESOL 1402, and ESOL 1502) are credit bearing and can be applied toward a degree. English as a Second Language: Advanced English Proficiency Certificate The English as a Second Language (ESL) Certificate of Advanced English Proficiency provides non-native speakers of English with personal and professional development opportunities, encourages lifelong learning, and provides employers with measurable proof of proficiency in English. Each of the courses in the program addresses English language skills and abilities necessary for success in academic studies or in careers. The curriculum includes general college courses in composition, literature, and speech, as well as ESL. Students may also use this certificate in their native countries as verification of their advanced language study and proficiency in the English Language. Both full and part-time students whose native language is not English are eligible for this program ESOL Academic Advising In collaboration with the Counseling Office, the ESOL Administrator and full time ESOL faculty will advise and guide ESOL students through the ESOL curriculum towards their chosen field of study/major. If you are a current student and would like to make an ESOL Advising appointment with the ESOL Administrator, please click here. ESOL Tutoring Services All academic support is directed by the Academic Success Center, providing a wealth of individual, online, and small group tutoring for all majors. Current students may contact the Academic Success Center or ESOL Administrator to make an appointment. ESOL Faculty This dynamic team of faculty members hold graduate degrees in TESOL and related fields. They employ a range of student-centered instructional methods and techniques. Learning Outcomes Display academic values and readiness for content-area courses in an American post secondary system Take responsibility for his/her own learning Employ college resources to navigate the academic environment Demonstrate basic competence with information technology Demonstrate ability to comprehend, interpret and apply spoken, written and socio-cultural forms of communication Demonstrate awareness of both explicit and implied meaning in extended spoken discourse Read with comprehension of both content and organization Recognize and employ elements of socio-cultural communication appropriate to a variety of situations Apply a range of language structures to interact effectively in interpersonal and academic situations Speak with sufficient accuracy and fluency to report information and express and develop opinions Write about a variety of topics with level-appropriate correctness, clarity and detail Display effective cross-cultural communication competence Display understanding of and respect for cultures of fellow students Demonstrate awareness of and ability to function effectively in U.S. culture and society Español El programa académico de Inglés como Segundo Idioma (ESL) en Capital Community College prepara estudiantes para tomar cursos a nivel universitario y lograr sus metas educativas, ya sea para obtener un grado asociado o un certificado. En solidaridad con la misión de Capital Community College: El Programa de ESL se dedica a proveer acceso a la educación superior y apoyar a la comunidad multicultural de la región de Hartford a través del aprendizaje del idioma inglés. El currículo de ESL incluye cinco niveles de instrucción en las áreas de conversación, comprensión, lectura y escritura. Cada nivel se divide entre dos cursos dirigido por el mismo profesor. Se ha integrado programas digitales basado en web para facilitar el aprendizaje de los estudiantes. Recursos estudiantiles incluyen tutoría individual y en grupos dirigido por el Academic Success Center y consejería académica hecho en colaboracion con el Counseling Office. Para obtener más información sobre los pre-requisitos del Programa de ESL, llame a James Rodriguez, Administrador del Programa ESL a (860) 906-5203 o (860) 906-5144. La oficina de ESL se encuentra en el cuarto piso, puerta 406. Visitenos o llamenos hoy.