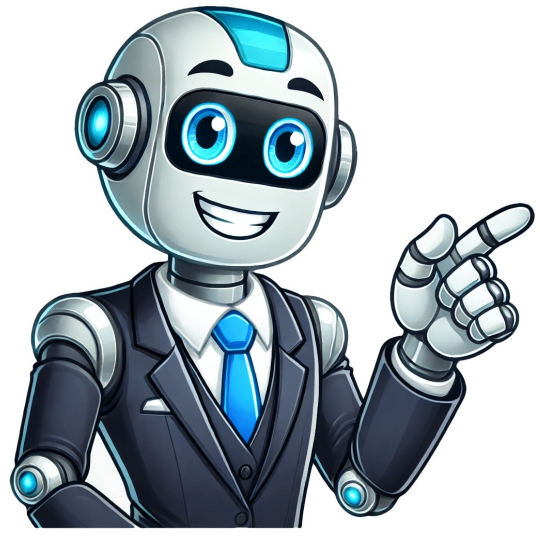


Continue

































of 120000 = 63 percent of 120000 = 75600 64 percent of 120000 = 76800 65 percent of 120000 = 78000 66 percent of 120000 = 79200 67 percent of 120000 = 80400 68 percent of 120000 = 81600 69 percent of 120000 = 82800 70 percent of 120000 = 84000 71 percent of 120000 = 85200 72 percent of 120000 = 86400 73 percent of 120000 = 87600 74 percent of 120000 = 88800 75 percent of 120000 = 90000 76 percent of 120000 = 91200 77 percent of 120000 = 92400 78 percent of 120000 = 93600 79 percent of 120000 = 94800 80 percent of 120000 = 96000 81 percent of 120000 = 97200 82 percent of 120000 = 98400 83 percent of 120000 = 99600 84 percent of 120000 = 100800 85 percent of 120000 = 102000 86 percent of 120000 = 103200 87 percent of 120000 = 104400 88 percent of 120000 = 105600 89 percent of 120000 = 106800 90 percent of 120000 = 108000 91 percent of 120000 = 109200 92 percent of 120000 = 110400 93 percent of 120000 = 111600 94 percent of 120000 = 112800 95 percent of 120000 = 114000 96 percent of 120000 = 115200 97 percent of 120000 = 116400 98 percent of 120000 = 117600 99 percent of 120000 = 118800 100 percent of 120000 = 120000 Above, we have a grafical representation using strip diagrams (or percent bars) of x percent of 20, where x ranges from 1 to 100%, for your reference.Similar queriesYou may have reached us perhaps looking for the answer to questions like:How do you find 20 percent of 120000?How to solve 20 percent of 120000?20 percent of 120000 solution20 percent of 120000 answer20 percent of 120000 formula20 percent of 120000 calculator. Page 16 One way to calculate percentages is to use this general percentage formula: If you know any two values of the formula, you can calculate the third one. In this example, you know the 'percentage' (50) and the 'whole' (1000). So, you can find the 'part'. By replacing the given values in the formula above, you get: Now you need to cross-multiply: 50 x 1000 = 100 x part, or 50000 = 100 x part Finally, you should divide by 100 then get the answer: part = 50000 = 500 (answer) 100 Percentage chart for 1000 0.1 percent of 1000 = 1 0.2 percent of 1000 = 2 0.25 percent of 1000 = 2.5 0.3 percent of 1000 = 3 0.4 percent of 1000 = 4 0.5 percent of 1000 = 5 0.6 percent of 1000 = 6 0.7 percent of 1000 = 7 0.8 percent of 1000 = 8 0.9 percent of 1000 = 9 1 percent of 1000 = 10 2 percent of 1000 = 20 3 percent of 1000 = 30 4 percent of 1000 = 40 5 percent of 1000 = 50 6 percent of 1000 = 60 7 percent of 1000 = 70 8 percent of 1000 = 80 9 percent of 1000 = 90 10 percent of 1000 = 100 11 percent of 1000 = 110 12 percent of 1000 = 120 13 percent of 1000 = 130 14 percent of 1000 = 140 15 percent of 1000 = 150 16 percent of 1000 = 160 17 percent of 1000 = 170 18 percent of 1000 = 180 19 percent of 1000 = 190 20 percent of 1000 = 200 21 percent of 1000 = 210 22 percent of 1000 = 220 23 percent of 1000 = 230 24 percent of 1000 = 240 25 percent of 1000 = 250 26 percent of 1000 = 260 27 percent of 1000 = 270 28 percent of 1000 = 280 29 percent of 1000 = 290 30 percent of 1000 = 300 31 percent of 1000 = 310 32 percent of 1000 = 320 33 percent of 1000 = 330 34 percent of 1000 = 340 35 percent of 1000 = 350 36 percent of 1000 = 360 37 percent of 1000 = 370 38 percent of 1000 = 380 39 percent of 1000 = 390 40 percent of 1000 = 400 41 percent of 1000 = 410 42 percent of 1000 = 420 43 percent of 1000 = 430 44 percent of 1000 = 440 45 percent of 1000 = 450 46 percent of 1000 = 460 47 percent of 1000 = 470 48 percent of 1000 = 480 49 percent of 1000 = 490 50 percent of 1000 = 500 51 percent of 1000 = 510 52 percent of 1000 = 520 53 percent of 1000 = 530 54 percent of 1000 = 540 55 percent of 1000 = 550 56 percent of 1000 = 560 57 percent of 1000 = 570 58 percent of 1000 = 580 59 percent of 1000 = 590 60 percent of 1000 = 600 61 percent of 1000 = 610 62 percent of 1000 = 620 63 percent of 1000 = 630 64 percent of 1000 = 640 65 percent of 1000 = 650 66 percent of 1000 = 660 67 percent of 1000 = 670 68 percent of 1000 = 680 69 percent of 1000 = 690 70 percent of 1000 = 700 71 percent of 1000 = 710 72 percent of 1000 = 720 73 percent of 1000 = 730 74 percent of 1000 = 740 75 percent of 1000 = 750 76 percent of 1000 = 760 77 percent of 1000 = 770 78 percent of 1000 = 780 79 percent of 1000 = 790 80 percent of 1000 = 800 81 percent of 1000 = 810 82 percent of 1000 = 820 83 percent of 1000 = 830 84 percent of 1000 = 840 85 percent of 1000 = 850 86 percent of 1000 = 860 87 percent of 1000 = 870 88 percent of 1000 = 880 89 percent of 1000 = 890 90 percent of 1000 = 900 91 percent of 1000 = 910 92 percent of 1000 = 920 93 percent of 1000 = 930 94 percent of 1000 = 940 95 percent of 1000 = 950 96 percent of 1000 = 960 97 percent of 1000 = 970 98 percent of 1000 = 980 99 percent of 1000 = 990 100 percent of 1000 = 1000 Above, we have a grafical representation using strip diagrams (or percent bars) of x percent of 50, where x ranges from 1 to 100%, for your reference.Similar queriesYou may have reached us perhaps looking for the answer to questions like:How do you find 50 percent of 1000?How to solve 50 percent of 1000?50 percent of 1000 solution50 percent of 1000 answer50 percent of 1000 formula50 percent of 1000 calculator. Page 17 One way to calculate percentages is to use this general percentage formula: If you know any two values of the formula, you can calculate the third one. In this example, you know the 'percentage' (40) and the 'whole' (12500). So, you can find the 'part'. By replacing the given values in the formula above, you get: Now you need to cross-multiply: 40 x 12500 = 100 x part, or 500000 = 100 x part Finally, you should divide by 100 then get the answer: part = 500000 = 5000 (answer) 100 Percentage chart for 12500 0.1 percent of 12500 = 12.5 0.2 percent of 12500 = 25 0.25 percent of 12500 = 31.25 0.3 percent of 12500 = 37.5 0.4 percent of 12500 = 50.0 0.5 percent of 12500 = 62.5 0.6 percent of 12500 = 75.0 0.7 percent of 12500 = 87.5 0.8 percent of 12500 = 100.0 0.9 percent of 12500 = 112.5 1 percent of 12500 = 125 2 percent of 12500 = 250 3 percent of 12500 = 375 4 percent of 12500 = 500 5 percent of 12500 = 625 6 percent of 12500 = 750 7 percent of 12500 = 875 8 percent of 12500 = 1000 9 percent of 12500 = 1125 10 percent of 12500 = 1250 11 percent of 12500 = 1375 12 percent of 12500 = 1500 13 percent of 12500 = 1625 14 percent of 12500 = 1750 15 percent of 12500 = 1875 16 percent of 12500 = 2000 17 percent of 12500 = 2125 18 percent of 12500 = 2250 19 percent of 12500 = 2375 20 percent of 12500 = 2500 21 percent of 12500 = 2625 22 percent of 12500 = 2750 23 percent of 12500 = 2875 24 percent of 12500 = 3000 25 percent of 12500 = 3125 26 percent of 12500 = 3250 27 percent of 12500 = 3375 28 percent of 12500 = 3500 29 percent of 12500 = 3625 30 percent of 12500 = 3750 31 percent of 12500 = 3875 32 percent of 12500 = 4000 33 percent of 12500 = 4125 34 percent of 12500 = 4250 35 percent of 12500 = 4375 36 percent of 12500 = 4500 37 percent of 12500 = 4625 38 percent of 12500 = 4750 39 percent of 12500 = 4875 40 percent of 12500 = 5000 41 percent of 12500 = 5125 42 percent of 12500 = 5250 43 percent of 12500 = 5375 44 percent of 12500 = 5500 45 percent of 12500 = 5625 46 percent of 12500 = 5750 47 percent of 12500 = 5875 48 percent of 12500 = 6000 49 percent of 12500 = 6125 50 percent of 12500 = 6250 51 percent of 12500 = 6375 52 percent of 12500 = 6500 53 percent of 12500 = 6625 54 percent of 12500 = 6750 55 percent of 12500 = 6875 56 percent of 12500 = 7000 57 percent of 12500 = 7125 58 percent of 12500 = 7250 59 percent of 12500 = 7375 60 percent of 12500 = 7500 61 percent of 12500 = 7625 62 percent of 12500 = 7750 63 percent of 12500 = 7875 64 percent of 12500 = 8000 65 percent of 12500 = 8125 66 percent of 12500 = 8250 67 percent of 12500 = 8375 68 percent of 12500 = 8500 69 percent of 12500 = 8625 70 percent of 12500 = 8750 71 percent of 12500 = 8875 72 percent of 12500 = 9000 73 percent of 12500 = 9125 74 percent of 12500 = 9250 75 percent of 12500 = 9375 76 percent of 12500 = 9500 77 percent of 12500 = 9625 78 percent of 12500 = 9750 79 percent of 12500 = 9875 80 percent of 12500 = 10000 81 percent of 12500 = 10125 82 percent of 12500 = 10250 83 percent of 12500 = 10375 84 percent of 12500 = 10500 85 percent of 12500 = 10625 86 percent of 12500 = 10750 87 percent of 12500 = 10875 88 percent of 12500 = 11000 89 percent of 12500 = 11125 90 percent of 12500 = 11250 91 percent of 12500 = 11375 92 percent of 12500 = 11500 93 percent of 12500 = 11625 94 percent of 12500 = 11750 95 percent of 12500 = 11875 96 percent of 12500 = 12000 97 percent of 12500 = 12125 98 percent of 12500 = 12250 99 percent of 12500 = 12375 100 percent of 12500 = 12500 Above, we have a grafical representation using strip diagrams (or percent bars) of x percent of 40, where x ranges from 1 to 100%, for your reference.Similar queriesYou may have reached us perhaps looking for the answer to questions like:How do you find 40 percent of 12500?How to solve 40 percent of 12500?40 percent of 12500 solution40 percent of 12500 answer40 percent of 12500 formula40 percent of 12500 calculator. Page 18 Page 19 One way to calculate percentages is to use this general percentage formula: If you know any two values of the formula, you can calculate the third one. In this example, you know the 'percentage' (20) and the 'whole' (490). So, you can find the 'part'. By replacing the given values in the formula above, you get: Now you need to cross-multiply: 20 x 490 = 100 x part, or 9800 = 100 x part Finally, you should divide by 100 then get the answer: part = 9800 = 98 (answer) 100 Percentage chart for 490 0.1 percent of 490 = 0.49 0.2 percent of 490 = 0.98 0.25 percent of 490 = 1.225 0.3 percent of 490 = 1.47 0.4 percent of 490 = 1.96 0.5 percent of 490 = 2.45 0.6 percent of 490 = 2.94 0.7 percent of 490 = 3.43 0.8 percent of 490 = 3.92 0.9 percent of 490 = 4.41 1 percent of 490 = 4.9 2 percent of 490 = 9.8 3 percent of 490 = 14.7 4 percent of 490 = 19.6 5 percent of 490 = 24.5 6 percent of 490 = 29.4 7 percent of 490 = 34.3 8 percent of 490 = 39.2 9 percent of 490 = 44.1 10 percent of 490 = 49 11 percent of 490 = 53.9 12 percent of 490 = 58.8 13 percent of 490 = 63.7 14 percent of 490 = 68.6 15 percent of 490 = 73.5 16 percent of 490 = 78.4 17 percent of 490 = 83.3 18 percent of 490 = 88.2 19 percent of 490 = 93.1 20 percent of 490 = 98 21 percent of 490 = 102.9 22 percent of 490 = 107.8 23 percent of 490 = 112.7 24 percent of 490 = 117.6 25 percent of 490 = 122.5 26 percent of 490 = 127.4 27 percent of 490 = 132.3 28 percent of 490 = 137.2 29 percent of 490 = 142.1 30 percent of 490 = 147 31 percent of 490 = 151.9 32 percent of 490 = 156.8 33 percent of 490 = 161.7 34 percent of 490 = 166.6 35 percent of 490 = 171.5 36 percent of 490 = 176.4 37 percent of 490 = 181.3 38 percent of 490 = 186.2 39 percent of 490 = 191.1 40 percent of 490 = 196 41 percent of 490 = 200.9 42 percent of 490 = 205.8 43 percent of 490 = 210.7 44 percent of 490 = 215.6 45 percent of 490 = 220.5 46 percent of 490 = 225.4 47 percent of 490 = 230.3 48 percent of 490 = 235.2 49 percent of 490 = 240.1 50 percent of 490 = 245 51 percent of 490 = 249.9 52 percent of 490 = 254.8 53 percent of 490 = 259.7 54 percent of 490 = 264.6 55 percent of 490 = 269.5 56 percent of 490 = 274.4 57 percent of 490 = 279.3 58 percent of 490 = 284.2 59 percent of 490 = 289.1 60 percent of 490 = 294 61 percent of 490 = 298.9 62 percent of 490 = 303.8 63 percent of 490 = 308.7 64 percent of 490 = 313.6 65 percent of 490 = 318.5 66 percent of 490 = 323.4 67 percent of 490 = 328.3 68 percent of 490 = 333.2 69 percent of 490 = 338.1 70 percent of 490 = 343 71 percent of 490 = 347.9 72 percent of 490 = 352.8 73 percent of 490 = 357.7 74 percent of 490 = 362.6 75 percent of 490 = 367.5 76 percent of 490 = 372.4 77 percent of 490 = 377.3 78 percent of 490 = 382.2 79 percent of 490 = 387.1 80 percent of 490 = 392 81 percent of 490 = 396.9 82 percent of 490 = 401.8 83 percent of 490 = 406.7 84 percent of 490 = 411.6 85 percent of 490 = 416.5 86 percent of 490 = 421.4 87 percent of 490 = 426.3 88 percent of 490 = 431.2 89 percent of 490 = 436.1 90 percent of 490 = 441 91 percent of 490 = 445.9 92 percent of 490 = 450.8 93 percent of 490 = 455.7 94 percent of 490 = 460.6 95 percent of 490 = 465.5 96 percent of 490 = 470.4 97 percent of 490 = 475.3 98 percent of 490 = 480.2 99 percent of 490 = 485.1 100 percent of 490 = 490 Above, we have a grafical representation using strip diagrams (or percent bars) of x percent of 20, where x ranges from 1 to 100%, for your reference.Similar queriesYou may have reached us perhaps looking for the answer to questions like:How do you find 20 percent of 490?How to solve 20 percent of 490?20 percent of 490 solution20 percent of 490 answer20 percent of 490 formula20 percent of 490 calculator. Page 20 One way to calculate percentages is to use this general percentage formula: If you know any two values of the formula, you can calculate the third one. In this example, you know the 'percentage' (30) and the 'whole' (30). So, you can find the 'part'. By replacing the given values in the formula above, you get: Now you need to cross-multiply: 30 x 30 = 100 x part, or 900 = 100 x part Finally, you should divide by 100 then get the answer: part = 900 = 9 (answer) 100 Percentage chart for 30 0.1 percent of 30 = 0.03 0.2 percent of 30 = 0.06 0.25 percent of 30 = 0.075 0.3 percent of 30 = 0.09 0.4 percent of 30 = 0.12 0.5 percent of 30 = 0.15 0.6 percent of 30 = 0.18 0.7 percent of 30 = 0.21 0.8 percent of 30 = 0.24 0.9 percent of 30 = 0.27 1 percent of 30 = 0.3 2 percent of 30 = 0.6 3 percent of 30 = 0.9 4 percent of 30 = 1.2 5 percent of 30 = 1.5 6 percent of 30 = 1.8 7 percent of 30 = 2.1 8 percent of 30 = 2.4 9 percent of 30 = 2.7 10 percent of 30 = 3 11 percent of 30 = 3.3 12 percent of 30 = 3.6 13 percent of 30 = 3.9 14 percent of 30 = 4.2 15 percent of 30 = 4.5 16 percent of 30 = 4.8 17 percent of 30 = 5.1 18 percent of 30 = 5.4 19 percent of 30 = 5.7 20 percent of 30 = 6 21 percent of 30 = 6.3 22 percent of 30 = 6.6 23 percent of 30 = 6.9 24 percent of 30 = 7.2 25 percent of 30 = 7.5 26 percent of 30 = 7.8 27 percent of 30 = 8.1 28 percent of 30 = 8.4 29 percent of 30 = 8.7 30 percent of 30 = 9 31 percent of 30 = 9.3 32 percent of 30 = 9.6 33 percent of 30 = 9.9 34 percent of 30 = 10.2 35 percent of 30 = 10.5 36 percent of 30 = 10.8 37 percent of 30 = 11.1 38 percent of 30 = 11.4 39 percent of 30 = 11.7 40 percent of 30 = 12 41 percent of 30 = 12.3 42 percent of 30 = 12.6 43 percent of 30 = 12.9 44 percent of 30 = 13.2 45 percent of 30 = 13.5 46 percent of 30 = 13.8 47 percent of 30 = 14.1 48 percent of 30 = 14.4 49 percent of 30 = 14.7 50 percent of 30 = 15 51 percent of 30 = 15.3 52 percent of 30 = 15.6 53 percent of 30 = 15.9 54 percent of 30 = 16.2 55 percent of 30 = 16.5 56 percent of 30 = 16.8 57 percent of 30 = 17.1 58 percent of 30 = 17.4 59 percent of 30 = 17.7 60 percent of 30 = 18 61 percent of 30 = 18.3 62 percent of 30 = 18.6 63 percent of 30 = 18.9 64 percent of 30 = 19.2 65 percent of 30 = 19.5 66 percent of 30 = 19.8 67 percent of 30 = 20.1 68 percent of 30 = 20.4 69 percent of 30 = 20.7 70 percent of 30 = 21 71 percent of 30 = 21.3 72 percent of 30 = 21.6 73 percent of 30 = 21.9 74 percent of 30 = 22.2 75 percent of 30 = 22.5 76 percent of 30 = 22.8 77 percent of 30 = 23.1 78 percent of 30 = 23.4 79 percent of 30 = 23.7 80 percent of 30 = 24 81 percent of 30 = 24.3 82 percent of 30 = 24.6 83 percent of 30 = 24.9 84 percent of 30 = 25.2 85 percent of 30 = 25.5 86 percent of 30 = 25.8 87 percent of 30 = 26.1 88 percent of 30 = 26.4 89 percent of 30 = 26.7 90 percent of 30 = 27 91 percent of 30 = 27.3 92 percent of 30 = 27.6 93 percent of 30 = 27.9 94 percent of 30 = 28.2 95 percent of 30 = 28.5 96 percent of 30 = 28.8 97 percent of 30 = 29.1 98 percent of 30 = 29.4 99 percent of 30 = 29.7 100 percent of 30 = 30 Above, we have a grafical representation using strip diagrams (or percent bars) of x percent of 30, where x ranges from 1 to 100%, for your reference.Similar queriesYou may have reached us perhaps looking for the answer to questions like:How do you find 30 percent of 30?How to solve 30 percent of 30?30 percent of 30 solution30 percent of 30 answer30 percent of 30 formula30 percent of 30 calculator. Page 21 Page 22 Page 23 One way to calculate percentages is to use this general percentage formula: If you know any two values of the formula, you can calculate the third one. In this example, you know the 'percentage' (6) and the 'whole' (2650). So, you can find the 'part'. By replacing the given values in the formula above, you get: Now you need to cross-multiply: 6 x 2650 = 100 x part, or 15900 = 100 x part Finally, you should divide by 100 then get the answer: part = 15900 = 159 (answer) 100 Percentage chart for 2650 0.1 percent of 2650 = 2.65 0.2 percent of 2650 = 5.3 0.25 percent of 2650 = 6.625 0.3 percent of 2650 = 7.95 0.4 percent of 2650 = 9.6 0.5 percent of 2650 = 13.25 0.6 percent of 2650 = 15.9 0.7 percent of 2650 = 18.55 0.8 percent of 2650 = 21.2 0.9 percent of 2650 = 23.85 1 percent of 2650 = 26.5 2 percent of 2650 = 53 3 percent of 2650 = 79.5 4 percent of 2650 = 106 5 percent of 2650 = 132.5 6 percent of 2650 = 159 7 percent of 2650 = 185.5 8 percent of 2650 = 212 9 percent of 2650 = 238.5 10 percent of 2650 = 265 11 percent of 2650 = 291.5 12 percent of 2650 = 318 13 percent of 2650 = 344.5 14 percent of 2650 = 371 15 percent of 2650 = 397.5 16 percent of 2650 = 424 17 percent of 2650 = 450.5 18 percent of 2650 = 477 19 percent of 2650 = 503.5 20 percent of 2650 = 530 21 percent of 2650 = 556.5 22 percent of 2650 = 583 23 percent of 2650 = 609.5 24 percent of 2650 = 636 25 percent of 2650 = 662.5 26 percent of 2650 = 689 27 percent of 2650 = 715.5 28 percent of 2650 = 742 29 percent of 2650 = 768.5 30 percent of 2650 = 795 31 percent of 2650 = 821.5 32 percent of 2650 = 848 33 percent of 2650 = 874.5 34 percent of 2650 = 901 35 percent of 2650 = 927.5 36 percent of 2650 = 954 37 percent of 2650 = 980.5 38 percent of 2650 = 1007 39 percent of 2650 = 1033.5 40 percent of 2650 = 1060 41 percent of 2650 = 1086.5 42 percent of 2650 = 1113 43 percent of 2650 = 1139.5 44 percent of 2650 = 1166 45 percent of 2650 = 1192.5 46 percent of 2650 = 1219 47 percent of 2650 = 1245.5 48 percent of 2650 = 1272 49 percent of 2650 = 1298.5 50 percent of 2650 = 1325 51 percent of 2650 = 1351.5 52 percent of 2650 = 1378 53 percent of 2650 = 1404.5 54 percent of 2650 = 1431 55 percent of 2650 = 1457.5 56 percent of 2650 = 1484 57 percent of 2650 = 1510.5 58 percent of 2650 = 1537 59 percent of 2650 = 1563.5 60 percent of 2650 = 1590 61 percent of 2650 = 1616.5 62 percent of 2650 = 1643 63 percent of 2650 = 1669.5 64 percent of 2650 = 1696 65 percent of 2650 = 1722.5 66 percent of 2650 = 1749 67 percent of 2650 = 1775.5 68 percent of 2650 = 1802 69 percent of 2650 = 1828.5 70 percent of 2650 = 1855 71 percent of 2650 = 1881.5 72 percent of 2650 = 1908 73 percent of 2650 = 1934.5 74 percent of 2650 = 1961 75 percent of 2650 = 1987.5 76 percent of 2650 = 2014 77 percent of 2650 = 2040.5 78 percent of 2650 = 2067 79 percent of 2650 = 2093.5 80 percent of 2650 = 2120 81 percent of 2650 = 2146.5 82 percent of 2650 = 2173 83 percent of 2650 = 2199.5 84 percent of 2650 = 2226 85 percent of 2650 = 2252.5 86 percent of 2650 = 2279 87 percent of 2650 = 2305.5 88 percent of 2650 = 2332 89 percent of 2650 = 2358.5 90 percent of 2650 = 2385 91 percent of 2650 = 2411.5 92 percent of 2650 = 2438 93 percent of 2650 = 2464.5 94 percent of 2650 = 2491 95 percent of 2650 = 2517.5 96 percent of 2650 = 2544 97 percent of 2650 = 2570.5 98 percent of 2650 = 2597 99 percent of 2650 = 2623.5 100 percent of 2650 = 2650 Above, we have a grafical representation using strip diagrams (or percent bars) of x percent of 6, where x ranges from 1 to 100%, for your reference.Similar queriesYou may have reached us perhaps looking for the answer to questions like:How do you find 6 percent of 2650?How to solve 6 percent of 2650?6 percent of 2650 solution6 percent of 2650 answer6 percent of 2650 formula6 percent of 2650 calculator. Page 24 One way to calculate percentages is to use this general percentage formula: If you know any two values of the formula, you can calculate the third one. In this example, you know the 'percentage' (10) and the 'whole' (150). So, you can find the 'part'. By replacing the given values in the formula above, you get: Now you need to cross-multiply: 10 x 150 = 100 x part, or 1500 = 100 x part Finally, you should divide by 100 then get the answer: part = 1500 = 15 (answer) 100 Percentage chart for 150 0.1 percent of 150 = 0.15 0.2 percent of 150 = 0.3 0.25 percent of 150 = 0.375 0.3 percent of 150 = 0.45 0.4 percent of 150 = 0.6 0.5 percent of 150 = 0.75 0.6 percent of 150 = 0.9 0.7 percent of 150 = 1.05 0.8 percent of 150 = 1.2 0.9 percent of 150 = 1.35 1 percent of 150 = 1.5 2 percent of 150 = 3 3 percent of 150 = 4.5 4 percent of 150 = 6 5 percent of 150 = 7.5 6 percent of 150 = 9 7 percent of 150 = 10.5 8 percent of 150 = 12 9 percent of 150 = 13.5 10 percent of 150 = 15 11 percent of 150 = 16.5 12 percent of 150 = 18 13 percent of 150 = 19.5 14 percent of 150 = 21 15 percent of 150 = 22.5 16 percent of 150 = 24 17 percent of 150 = 25.5 18 percent of 150 = 27 19 percent of 150 = 28.5 20 percent of 150 = 30 21 percent of 150 = 31.5 22 percent of 150 = 33 23 percent of 150 = 34.5 24 percent of 150 = 36 25 percent of 150 = 37.5 26 percent of 150 = 39 27 percent of 150 = 40.5 28 percent of 150 = 42 29 percent of 150 = 43.5 30 percent of 150 = 45 31 percent of 150 = 46.5 32 percent of 150 = 48 33 percent of 150 = 49.5 34 percent of 150 = 51 35 percent of 150 = 52.5 36 percent of 150 = 54 37 percent of 150 = 55.5 38 percent of 150 = 57 39 percent of 150 = 58.5 40 percent of 150 = 60 41 percent of 150 = 61.5 42 percent of 150 = 63 43 percent of 150 = 64.5 44 percent of 150 = 66 45 percent of 150 = 67.5 46 percent of 150 = 69 47 percent of 150 = 70.5 48 percent of 150 = 72 49 percent of 150 = 73.5 50 percent of 150 = 75 51 percent of 150 = 76.5 52 percent of 150 = 78 53 percent of 150 = 79.5 54 percent of 150 = 81 55 percent of 150 = 82.5 56 percent of 150 = 84 57 percent of 150 = 85.5 58 percent of 150 = 87 59 percent of 150 = 88.5 60 percent of 150 = 90 61 percent of 150 = 91.5 62 percent of 150 = 93 63 percent of 150 = 94.5 64 percent of 150 = 96 65 percent of 150 = 97.5 66 percent of 150 = 99 67 percent of 150 = 100.5 68 percent of 150 = 102 69 percent of 150 = 103.5 70 percent of 150 = 105 71 percent of 150 = 106.5 72 percent of 150 = 108 73 percent of 150 = 109.5 74 percent of 150 = 111 75 percent of 150 = 112.5 76 percent of 150 = 114 77 percent of 150 = 115.5 78 percent of 150 = 117 79 percent of 150 = 118.5 80 percent of 150 = 120 81 percent of 150 = 121.5 82 percent of 150 = 123 83 percent of 150 = 124.5 84 percent of 150 = 126 85 percent of 150 =