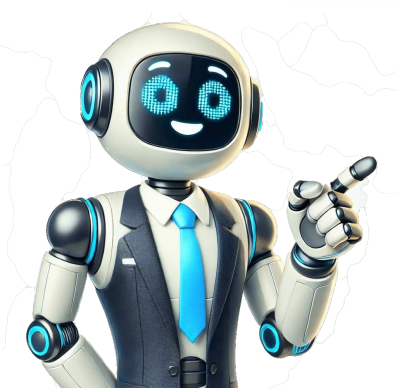


Click to prove
you're human



Did we answer your question? Thank you for your feedback We are so sorry we were unable to answer your question. You might be able to find the answer you are looking for in the 'Related Questions' below. If your query is still unanswered, please head over to our Contact Us page for further assistance. Fortunately, fixing a Beko washing machine door lock is often a DIY project, saving you the cost of a technician. The solenoid, controlled by the washing machine's control board, engages and disengages the latch, allowing or preventing the door from opening. The door switch, which signals the control board that the door is closed, can become stuck, preventing the door lock from releasing. If your Beko washing machine refuses to open, leaving you staring at a mountain of dirty laundry? This frustrating situation often arises due to a malfunctioning door lock. Fortunately, fixing a Beko washing machine door lock is often a DIY project, saving you the cost of a technician. This guide will walk you through the common issues and solutions, empowering you to tackle this problem head-on. Understanding the Beko Washing Machine Door Lock The door lock mechanism on a Beko washing machine is crucial for safety. It prevents the door from opening during a cycle, ensuring the water and spin cycles operate without interruption. This lock usually consists of a solenoid, a latch, and a switch. The solenoid, controlled by the washing machine's control board, engages and disengages the latch, allowing or preventing the door from opening. Common Beko Washing Machine Door Lock Problems Several issues can cause your Beko washing machine door lock to malfunction: Faulty Solenoid: The solenoid, responsible for engaging and disengaging the latch, can become faulty due to wear and tear, electrical problems, or even debris clogging its mechanism. Broken Latch: The latch, which physically secures the door, can break or become misaligned, preventing the door from opening. Control Board Malfunction: The control board, which sends signals to the solenoid, can malfunction, causing the door lock to become unresponsive. Stuck Switch: The door switch, which signals the control board that the door is closed, can become stuck, preventing the door lock from releasing. Foreign Object Obstruction: Sometimes, small objects like coins or buttons can get stuck in the door lock mechanism, hindering its operation. Before diving into repairs, it's essential to troubleshoot the problem to pinpoint the exact cause. Here's a step-by-step guide: 1. Check the Power Supply: Ensure the washing machine is plugged in and the power switch is on. 2. Check the Door Switch: Make sure the door is securely closed and that the door switch is depressed. A stuck switch can prevent the lock from releasing. 3. Check for Obstructions: Look for any visible obstructions in the door lock mechanism. Remove any debris or foreign objects. 4. Check the Solenoid: If the door lock doesn't release after addressing the above, the solenoid might be faulty. Listen for a clicking sound when you attempt to open the door. If you hear a click but the door doesn't open, the solenoid might be weak or stuck. 5. Check the Latch: If the latch appears broken or misaligned, it needs to be replaced. Fixing a Faulty Solenoid If you suspect a faulty solenoid, you'll need to replace it. Here's how: 1. Disconnect Power: Unplug the washing machine from the power outlet. 2. Locate the Solenoid: The solenoid is usually located on the side of the door lock mechanism. 3. Remove the Solenoid: Disconnect the electrical connector from the solenoid and remove the screws holding it in place. 4. Install the New Solenoid: Install the new solenoid, ensuring the electrical connector is securely connected. 5. Reassemble and Test: Reassemble the door lock mechanism and plug the washing machine back in. Test the door lock by starting a cycle and checking if it releases at the end. Fixing a Broken Latch A broken latch requires replacement. Here's how: 1. Disconnect Power: Unplug the washing machine from the power outlet. 2. Locate the Latch: The latch is usually located on the inside of the door. 3. Remove the Latch: Remove the screws or clips holding the latch in place. 4. Install the New Latch: Install the new latch, ensuring it's securely fastened. 5. Reassemble and Test: Reassemble the door lock mechanism and plug the washing machine back in. Test the door lock by starting a cycle and checking if it releases at the end. If you suspect a control board malfunction, you'll need to replace it. This is a more complex procedure and may require specialized knowledge. It's advisable to consult a qualified technician for this repair. Preventing Future Door Lock Problems Regular Cleaning: Clean the door lock mechanism regularly with a soft cloth and mild detergent to remove any dust or debris that could cause malfunctions. Handle with Care: Avoid slamming the door shut or forcing it open, as this can damage the lock mechanism. Prevent Overloading: Don't overload the washing machine, as this can put undue stress on the door lock mechanism. By understanding the common issues and following these steps, you can confidently tackle a faulty Beko washing machine door lock. Remember, safety is paramount. If you're unsure about any repair, consult a qualified technician. With a little effort, you can have your Beko washing machine back in tip-top shape, ready to tackle your laundry needs. Answers to Your Questions Q: What should I do if the door lock is still stuck after trying these solutions? A: If the door lock remains stuck after trying the troubleshooting steps, it's likely a more serious issue, such as a faulty control board or a mechanical problem within the door lock mechanism. In this case, it's best to contact a qualified technician. Q: Can I use WD-40 on the door lock mechanism? A: While WD-40 can loosen up stuck parts, it's not recommended for use on washing machine door locks. It can attract dust and dirt, potentially causing more problems. Q: Why is my Beko washing machine door lock clicking but not releasing? A: A clicking sound without the door releasing indicates a weak or stuck solenoid. This usually requires replacement. Q: How often should I clean the door lock mechanism? A: It's a good idea to clean the door lock mechanism every 3-6 months to prevent dust and debris buildup. Q: Can I lubricate the door lock mechanism? A: Yes, you can use a silicone-based lubricant on the door lock mechanism to prevent rust and ensure smooth operation. Avoid using oil-based lubricants, as they can attract dirt and dust. Did we answer your question? Thank you for your feedback We are so sorry we were unable to answer your question. You might be able to find the answer you are looking for in the 'Related Questions' below. If your query is still unanswered, please head over to our Contact Us page for further assistance. If the water pressure is too low, the machine might not be able to drain properly, causing the door to remain locked. A damaged door seal can prevent the door from locking correctly, leading to a stuck door. If the washing machine is still hot, the door might be locked due to the heat. Are you staring at your Beko washing machine, wondering how to open the door after the cycle has finished? A stuck washing machine door can be incredibly frustrating, especially when you need to unload your laundry. Don't worry, this is a common issue, and in most cases, you can solve it yourself. This guide will walk you through the most common reasons why your Beko washing machine door won't open and provide simple solutions to get your laundry going again. Understanding the Problem: Why Won't My Beko Washing Machine Door Open? Your Beko washing machine door is designed to lock during the cycle to ensure safety and prevent leaks. However, sometimes the locking mechanism can malfunction, or the door might be stuck due to other reasons. Here are the most common culprits: The cycle is still running: The most obvious reason your door won't open is that the washing cycle hasn't finished yet. Wait for the cycle to complete, and the door should unlock automatically. The door latch is faulty: The latch mechanism might be jammed or broken, preventing the door from releasing. Water pressure issues: If the water pressure is too low, the machine might not be able to drain properly, causing the door to remain locked. The door seal is damaged: A damaged door seal can prevent the door from locking correctly, leading to a stuck door. Power issues: An electrical fault could prevent the door from unlocking. Troubleshooting Tips: Getting Your Beko Washing Machine Door Open Before calling a repair service, try these simple troubleshooting steps: 1. Check if the cycle is finished: Make sure the washing machine has completely finished the cycle. The indicator lights should be off, and the machine should be quiet. 2. Check the door latch: Look for any visible obstructions or debris around the door latch. Try gently pushing or pulling the latch to see if it moves freely. 3. Wait for the machine to cool down: If the washing machine is still hot, the door might be locked due to the heat. Wait for it to cool down completely before trying to open the door again. 4. Check the water supply: Ensure the water supply to the washing machine is turned on. If the water pressure is low, it may prevent the door from unlocking. 5. Check the power supply: Make sure the washing machine is plugged in properly and that there is power to the outlet. If the basic troubleshooting steps haven't worked, try these specific solutions: Manually unlocking the door: Some Beko washing machines have a manual release mechanism. Check the instruction manual for your specific model to find out where it is located. Resetting the washing machine: Unplug the washing machine from the power outlet and wait for at least 30 seconds before plugging it back in. This can sometimes reset the control panel and unlock the door. Checking the door seal: Inspect the door seal for any damage or debris. Clean it thoroughly with a soft cloth and mild detergent. If the door seal is damaged, it may need to be replaced. Calling a professional repair service: If you're unable to resolve the issue on your own, it's best to call a professional repair service. Here are some signs that you should contact a technician: The door latch is damaged or broken. There is a water leak, and you can't find the source. You hear unusual noises coming from the washing machine. You suspect an electrical fault. A qualified technician can diagnose the problem and provide a solution. Regular maintenance can help prevent future door problems: Clean the door seal regularly: Wipe the door seal with a damp cloth to remove any dirt or debris. Check the door latch: Make sure the door latch is clean and free of obstructions. Use the correct detergent: Using too much detergent can cause a buildup of residue that can clog the door latch. Don't overload the washing machine: Overloading the washing machine can put extra strain on the door latch and other components. A stuck Beko washing machine door can be a frustrating experience, but by following these troubleshooting tips and solutions, you can often get it open yourself. If you're still having trouble, don't hesitate to call a professional for help. Remember, regular maintenance can help prevent future door problems and keep your washing machine running smoothly. What You Need to Know Q: What if I can't find a manual release mechanism on my Beko washing machine? A: If your Beko washing machine model doesn't have a manual release mechanism, you'll need to contact a qualified technician for assistance. Q: How often should I clean the door seal on my Beko washing machine? A: It's a good idea to clean the door seal at least once a month to prevent dirt and debris from building up. Q: Can I use bleach to clean the door seal on my Beko washing machine? A: While bleach can kill bacteria and mold, it can also damage the rubber seal. It's best to use a mild detergent or a specialized washing machine cleaner. Q: Is it safe to force open the door of my Beko washing machine? A: It's not recommended to force open the door, as this could damage the door latch or other components. It's best to follow the troubleshooting steps outlined in this guide or contact a professional if necessary. Q: What should I do if I suspect an electrical problem? A: If you suspect an electrical fault, unplugging the washing machine immediately and contacting a qualified electrician are the safest options. Attempting to fix an electrical problem yourself can be dangerous. Your Beko washer has door lock which ensures that the door remains closed during the wash cycle, thus preventing water leakage. By default, the door won't open when the wash cycle is in progress. However, under unusual circumstances, your Beko washer door may get stuck even when it's turned off. This issue is most common on Beko front-loader washers. This guide explains why this happens and how to unlock your Beko washing machine door when it doesn't open normally. If your Beko washing machine door gets locked, do this to unlock it: First, reset your washer. If this does not work, check the child lock and disable it if it is accidentally enabled. Also, try to inspect and tighten the drain hose, door lid switch, and washer timer. I will explain these fixes in detail. First, however, here are some words of caution: If your Beko washing machine is under warranty, I recommend contacting Beko support and asking for advice. Unfortunately, opening your Beko washer door is mostly locked or stuck and won't open due to technical glitches in its program or board. This issue can be quickly resolved by simply resetting your washer. So, the first step in troubleshooting your Beko washer when its door gets stuck, then it's most probably due to the drain hose, which is either damaged or loose. To check the drain hose, first, disconnect your Beko washing machine from the power source. Then, access the drain hose and make sure it is properly tightened in its place. Also, check it for any clogs or obstructions. The door latch switch on the Beko washing machine is designed to prevent the door from opening during the wash cycle. If this switch malfunctions during the cycle, your washing machine door might get stuck. The door latch or lid switch is located beneath the control board. So if your Beko washer is under warranty, do not try to test it yourself, as it will void its warranty. Even if your washer warranty period is over, I'd recommend seeking a professional help to test or replace the door latch switch on your Beko washer. If your Beko washing machine is automatic or semi-automatic, its functions depend on the timer. The timer may be displaced due to normal wear and tear if your Beko washer is old. When the timer on your Beko washer is faulty or displaced, it will prevent the door from unlocking after the wash cycle is completed. Testing and replacing the door latch switch on your Beko washer is not something I'd recommend doing yourself, so always seek professional help. When your Beko washing machine door gets locked, try following fixes to unlock/open it: Reset your washing machine Disable child lock Inspect and tighten drain hose Check the door lid switch Check the washer timer Was this page helpful? How can I open my Beko washing machine door? If you're having trouble opening your Beko washing machine door, follow these simple steps to safely resolve the issue: Step 1: Wait for the Program to Finish The door of the washing machine is designed not to open during a running cycle for safety reasons, especially if there is water inside. Wait for the washing program to fully finish before attempting to open the door. Step 2: Wait for 2 Minutes After the Program Ends After the cycle is complete, the machine might take up to 2 minutes to unlock the door. During this time, the machine is draining any remaining water and ensuring it's safe to open. Be patient and wait for the door to unlock automatically. Step 3: Turn Off the Machine and Wait Again If the door still doesn't open after 2 minutes: 1. Switch off the washing machine completely. 2. Wait for another 2 minutes before trying to open the door again. Sometimes, resetting the machine can help release the lock. By following these steps, you should be able to safely open your washing machine door and avoid causing any damage to the appliance. Download Article Save your clothes and get your washing machine back in order with these tricks Download Article Is your washing machine sealed shut and refusing to cooperate? Whether the power went out, the handle broke, or your door is simply locked shut, there are times when you need to open your washing machine door and rescue your clothes trapped inside. Fortunately, there are several easy tricks you can try to unlock a washing machine door when it's stuck. Even your stubborn washing machine won't be invincible to the expert tips below. Unplug the machine and wait a few minutes. Most doors will open once the power is off and the temperature cools off. Try knocking gently on the handle or pressing the pause/start button. Loop fishing line around the locked door and pull away from the door to manually unlock the locking mechanism. Alternatively, remove the panel at the top or bottom of the machine and pull on the color-coded tab to disable the locking mechanism. 1 Set out towels under the machine if it's mid-cycle. If your washing machine has stopped working or you're trying to open the door mid-cycle, set 4-5 dry towels down under the washing machine's door. This will soak up any water that spills over when you open the door. For a top-loading washer, go ahead and skip this section. You don't really need to worry about water spilling out since none of the solutions involve tilting your machine over. If your washing machine is empty or it hasn't filled with water yet, go ahead and skip this section. 2 Lay a large pan or container in front of the door. If there's a ton of water in your machine, the towels won't be enough. Grab a few large baking pans, buckets, or plastic containers and set them out underneath the machine. If there's a ton of water you won't be able to catch all of it, but you'll at least be able to stop most of the water from spilling over to your floor. You can elevate the machine to raise the angle of your door with wood blocks or bricks if you want. If you do this, you have to be extremely careful though. If the machine slips down, you'll have a heavy piece of machinery slamming into the floor. It's usually better to just clean up the water afterwards. Advertisement 3 Pull your drain hose out and empty the water into a bucket. Go to the back of your dryer and locate the drain line. This is the hose that doesn't connect to the hot and cold water lines on the wall. Either unscrew it by turning it counterclockwise, or simply pull it out of the seal. Keep it raised up and carefully lower it into a bucket that is lower than your machine's door. The majority of your water will empty out into the bucket.[1] This may not work if your drain line is blocked or the machine's settings are locked in the mid-cycle settings. Your door may unlock as soon as you drain it. Some washers automatically lock if there's a lot of water inside. Check to make sure that the drain hose is not inserted too far into the drain pipe at the wall. 4 Drain the water through the filter if your machine has one. If you have a filter, pry the cover off with a flathead screwdriver or by hand. Raise the machine up and set a bucket underneath it. Reach carefully into the opening where the cover was and find the cap for your filter. Turn it counterclockwise by hand to loosen the filter and let the water flow out into the bucket.[2] Be careful to not put your feet or hands under the machine while it's raised up. You can use a brick or wood block to raise the machine up and set it on something stable. Lifting the machine can be pretty dangerous. If your machine is too heavy for you to raise on your own, you're better off simply dealing with problem while the water is still inside the drum. Advertisement 1 Turn the washing machine off and unplug it. If you're in the middle of a cycle, turn the dial or press the button to pause or end the cycle. Wait 5-6 seconds to see if the door unlocks. If it doesn't, turn the machine off by pressing the button or turning the dial all of the way to the off position. Unplug your machine. 2 Wait 5 minutes and then try pulling on the handle. Some locks automatically undo the latch after the machine has been off for 5 minutes. After you've pulled the plug, wait for a few minutes. Then, try to open the door by pulling on the handle.[3] This is going to be the solution for most top-loading machines. The latches on top-loaders are typically heat-activated and only lock when the machine is running. This feature is designed to give you access to your wet clothes in the event of a power outage or electrical failure. 3 Strike the handle gently with an open palm to loosen it. If your door still isn't unlocked, try loosening the lock with the power off. Use an open palm to gently strike the handle, right above the location of the lock. On some locks, this will be enough to shake it into the unlock position. Don't hit the machine so hard that you hurt yourself or damage the door. A little vibration and abrupt pressure should be plenty if your door can be unlocked this way. This is less likely to work on a top-loading machine since the lock hooks around a loop inside of the machine. 4 Loop a fishing line around the seam of the door. Grab some nylon string or a reel of fishing line. Pull out a 10-20 in (25-51 cm) length and slide it into the seam where your door meets the frame of the machine at the lock. Extend the length of your string or fishing line as you work it all the way around the door. The tie end of the string in a knot once it's completely wrapped around the door.[4] If your handle seems loose, this is the best way to open the door. Sometimes a lose handle can't trigger the lock to open because it isn't connected to it. You need to tie the line on the side of the machine that is opposite to the lock. If you have a top-loading machine, pull it out from the wall. Go behind it and loop the fishing line around the seam where the lid closes. Tie it near the backside of the machine. 5 Pull the fishing line away from the handle to unlock it. Grab the fishing line or nylon string by the knot. Pull it carefully away from the door at an angle parallel to the front of the machine. Continue to apply pressure until you hear a clicking noise. When you do, hold the string in place with your nondominant hand and reach over to the handle. Pull it out to open the door.[5] When you're doing this, you're physically pulling the lock out of the slot where it's locked in place. If this doesn't work, try using an old gift card or credit card to slide into the seam instead. Push the credit card into the lock to open it. On a top-loading machine, pull the string parallel to the lid, towards the backside of the machine. Advertisement 1 Press "pause" or "start" to try opening the door. This may sound obvious, but you may not have pressed the pause button to stop the cycle. Try pressing "pause" and wait 1-2 minutes to see if the door unlocks. Most locks will not open when a cycle is actively running so try this first to see if the door opens after pausing the cycle. On some machines, the "start" button functions as the pause button when the cycle is on. 2 Turn the washing machine off and unplug it. If pausing the cycle doesn't unlock the door, turn the machine off. Then, unplug the machine and wait 5-10 minutes. Try pulling the handle again to see if the door opens.[6] Some locks automatically flip into the unlocked position after 5-10 minutes so that you can get your clothes during a power outage. 3 Slide a flathead screwdriver in the seam of the bottom panel. Inspect the bottom of your washing machine on the front. There is a 2-6 in (5.1-15.2 cm) panel that appears to be a part of the machine. On the right side of the machine, slide a flathead screwdriver in between the frame and this bottom panel. On a top loader, this panel will be at the top. You can use a dull kitchen or butter knife instead of a flathead screwdriver. Keep in mind, you may end up bending it though. You can start on the left if you'd like. It really doesn't matter so long as you don't start in the center. If you do that, you may crack the panel since the tension is strongest in the center. 4 Pull the screwdriver handle up to pop the panel off. With the head of the screwdriver wedged in between the 2 panels, slide the handle up with moderate pressure to pop the panel off. Do this slowly to ensure that you don't bend or break the panel. Once the right side is off, repeat the process on the left side. If this isn't working, consult the washing machine's instruction manual. There may be a switch or a latch under your machine that you need to use to get this panel off. 5 Find the plastic tab sticking out under the handle. With the bottom panel set aside, look at the top of the section that you removed for a small plastic tab that is sticking out of the machine. This tab is usually directly under the lock on the handle, and it's often color-coded to make it easy to find. This tab is connected to the lock directly. It's a safety measure designed to manually unlock the machine in the event that the computer in the washer fails. 6 Pull the tab down 1-3 in (2.5-7.6 cm) while opening the front door. Once you've found the tab, grip it between your thumb and index finger. Pull slightly on the tab to bring it down 1-3 in (2.5-7.6 cm). With the tab pulled down, pull on your door handle to open it. If your door still won't open, contact a washing machine repair company. There may be a physical defect in the lock holding it shut. 7 Unscrew the bolts in the back of a top-loading machine to lift it up. Turn your top-loading machine around so that you can access the back. Look for 3-4 screws or bolts that are at the same height as your door handle. Use a wrench, screwdriver, or channel locks and remove them. Then, lift the entire top of the machine up by raising it from the top panel.[7] If unplugging the machine didn't resolve the problem for your top loader, the lock may be magnetic. This is common on digital machines. If you have a magnetic lock, you can't pry it open or trick it into unlocking. Instead, lift the entire panel up. Advertisement Ask a Question Advertisement Thanks Thanks Advertisement Co-authored by: Appliance Repair Specialist This article was co-authored by Homer Flores and by wikiHow staff writer, Eric McClure. Homer Flores is an Appliance Repair Specialist and Training Manager at PreFix, a home maintenance company out of Austin, Texas. With over 15 years of experience, Homer specializes in home improvement, remodeling, and construction. Homer's dedication to the PreFix mission of providing hassle-free one-stop-shop service for home care, in addition to their completion of the Capital Factory and Techstars Accelerators, has contributed to their growth of service to over 50 zip codes throughout the greater Austin area. This article has been viewed 620,569 times. Co-authors: 5 Updated: February 12, 2025 Views: 620,569 Categories: Washing Machines and Dryers Print Send fan mail to authors Thanks to all authors for creating a page that has been read 620,569 times. When your trusty Beko washing machine door becomes stuck or refuses to open, it can be a frustrating experience, especially when you need to get your laundry done. But don't worry, you're not alone! In this article, we'll guide you through the steps to open your Beko washing machine door, even when it seems impossible. By the end of this article, you'll be able to effortlessly open your washing machine door and get back to doing your laundry in no time.Why Won't My Beko Washing Machine Door Open?Before we dive into the solution, let's explore some common reasons why your Beko washing machine door might be stuck or refusing to open. Understanding the cause will help you troubleshoot and fix the issue more effectively.One of the most common reasons is that the door has been blocked or obstructed, preventing it from opening properly. This can happen when you're in a hurry and forget to remove a stray sock or a small toy from the previous wash cycle. It's easy to miss these items, but they can get caught in the door's mechanism, preventing it from closing properly. Another reason could be a manufacturing defect. Lastly, there might be an issue with the washing machine's electrical system, which can prevent the door from opening even when you've pressed the correct buttons. This could be due to a faulty sensor, a tripped fuse, or a malfunctioning control board.Step-by-Step Guide to Opening a Stuck Beko Washing Machine DoorNow that we've covered some common reasons why your Beko washing machine door might be stuck, let's get started with the step-by-step guide to opening it.Method 1: The Gentle PullThis method is the simplest and most straightforward approach to opening a stuck washing machine door. 1. Ensure the washing machine is turned off and unplugged from the power outlet. This is an essential safety precaution to avoid any accidents or electrical shocks. 2. Locate the door release button or catch, usually found on the front of the washing machine, near the door. It might be a small button, lever, or toggle switch. 3. Gently press or toggle the door release button while simultaneously pulling the door open. You might need to apply a bit of force, but be careful not to use too much pressure, as you don't want to damage the door or the surrounding mechanism. 4. If the door still doesn't budge, try wiggling it back and forth while applying gentle pressure. This can help loosen any obstruction or jammed parts.Method 2: The Credit Card TrickThis method is a bit more unconventional, but it's been known to work wonders in some cases. 1. Take a credit card or a similar tool with a sturdy, thin edge (like a flathead screwdriver or a similar tool). 2. Insert the credit card into the gap between the door and the washing machine's frame, starting from the top edge of the door. 3. Gently pry the door open by pushing the credit card further into the gap while applying gentle pressure. 4. As you push the credit card, try to open the door by tilting it towards you. Be careful not to push too hard, as you don't want to damage the door's surrounding mechanism or the washing machine's frame.Method 3: The Forceful Pull (With Caution)This method should be your last resort, as it requires more force and can potentially damage your washing machine door or the door. 1. Ensure the washing machine is turned off and unplugged from the power outlet. 2. Locate the door release button or catch, and press or toggle it as you normally would. 3. With both hands, firmly grasp the door handle and pull it open with a steady, controlled motion. Apply gentle to moderate force, but be prepared to stop immediately if you encounter any resistance or hear any unusual sounds. 4. If the door still doesn't open, you might need to consider consulting a professional repair technician or contacting Beko's customer support for further assistance.Additional Tips and PrecautionsTo avoid getting stuck with a jammed washing machine door in the future, here are some additional tips and precautions to keep in mind:to prevent dirt, dust, and soap residue from building up and causing jamming issues.before closing the door, ensuring that there are no stray items or loose clothing getting stuck inside the washing machine., as this can put excessive pressure on the door and its mechanism, leading to jamming or breakage.ConclusionOpening a stuck Beko washing machine door might seem like a daunting task, but with the right approach and a bit of patience, you can overcome the issue and get back to doing your laundry in no time. By following the methods outlined in this article, you'll be well-equipped to tackle even the most stubborn washing machine doors.Remember to always prioritize safety, and if you're unsure about attempting to open the door yourself, don't hesitate to consult a professional repair technician or contact Beko's customer support for further assistance.By taking the time to understand the common causes of stuck washing machine doors and following the step-by-step guide outlined in this article, you'll be able to overcome this frustrating issue and enjoy uninterrupted laundry sessions with your trusty Beko washing machine.FAQWhat is the most common reason for a Beko washing machine door to get stuck?The most common reason for a Beko washing machine door to get stuck is due to improper or forced closure. When the door is closed too quickly or with excessive force, it can cause the door's locking mechanism to jam, making it difficult to open. Additionally, blockages such as lint, dirt, or other debris can also cause the door to become stuck.To avoid this issue, it's essential to close the door gently and ensure it is properly aligned with the washing machine's frame. Regularly cleaning the door's locking mechanism and surrounding areas can also help prevent blockages and ensure smooth door operation.Can I force the door open if it gets stuck?It's not recommended to force the door open if it gets stuck, as this can cause further damage to the locking mechanism or other internal components of the washing machine. Forcing the door open can also lead to broken parts, electrical issues, or even safety hazards. Instead, try to troubleshoot the issue by checking for blockages, ensuring the door is properly aligned, and consulting the user manual.If you're still unable to open the door, it's best to contact a professional appliance repair technician who can safely and efficiently resolve the issue. They will have the necessary tools and expertise to diagnose and fix the problem without causing further damage to your washing machine.Are there any safety precautions I should take when trying to open a stuck Beko washing machine door?Yes, there are several safety precautions you should take when trying to open a stuck Beko washing machine door. First, ensure the washing machine is unplugged from the power outlet to prevent any electrical shocks or hazards. Next, avoid using excessive force or tools that can cause damage to the locking mechanism or other internal components. Additionally, be cautious when handling the door and surrounding areas, as they may be hot or damp. It's also essential to follow the manufacturer's guidelines and recommendations for troubleshooting and resolving the issue. If you're unsure or uncomfortable attempting to open the door, it's best to contact a professional appliance repair technician who can safely and efficiently resolve the issue. How to solve washing machine door not closing?If your washing machine door is not closing properly, here are some simple troubleshooting steps to resolve the issue: 1. Avoid Overloading the Machine One of the most common reasons for the shing machine door not closing is overloading. If the machine is too full, the door may not close securely, which can also lead to water leakage during the cycle. ● Remove a few items from the machine to ease the load, and then try closing the door again. 2. Check for Items Stuck Between the Door and the Gasket Sometimes, small items of clothing (like socks or cloth edges) can get stuck between the door and the rubber gasket, preventing it from closing properly. ● Inspect the door area and gasket for any stuck clothing or objects and remove them. Ensure that the area is clear before trying to close the door again. 3. Inspect the Door Latch If the machine is not overloaded and nothing is stuck between the door and the gasket, there might be an issue with the door latch itself. Check if the latch is working properly and aligns with the corresponding part of the door frame. ● If the latch seems misaligned or faulty, it might need repair or replacement. Contact a technician for further assistance if this is the case. By following these steps, you should be able to close your washing machine door properly and prevent issues during the wash cycle. Your Beko washer has door lock which ensures that the door remains closed during the wash cycle, thus preventing water leakage. By default, the door won't open when the wash cycle is in progress. However, under unusual circumstances, your Beko washer door may get stuck even when it is turned off. This issue is most common on Beko front-loader washers. This guide explains why this happens and how to unlock your Beko washing machine door when it doesn't open normally. If your Beko washing machine door gets locked, do this to unlock it: First, reset your washer. If this does not work, check the child lock and disable it if it is accidentally enabled. Also, try to inspect and tighten the drain hose, door lid switch, and washer timer. I will explain these fixes in detail. First, however, here are some words of caution: If your Beko washing machine is under warranty, I recommend contacting Beko support and asking for advice. Unfortunately, opening your Beko washer will void its warranty in most cases, so leave it as a last option. Your Beko washer door is mostly locked or stuck and won't open due to technical glitches in its program or board. This issue can be quickly resolved by simply resetting your washer. So, the first step in troubleshooting your Beko washer when its door gets locked is to reset it. The latest Beko washing machines have a child lock, a safety feature. When the child lock is activated, it prevents the washer door from unlocking or the wash cycle from accidental start. If the child lock is engaged on your Beko washer, it will be displayed on its display. So, disable the child lock and try to unlock your washing machine door. The drain hose is where the used water is pumped out of the washer. If your washing machine cannot drain the water, the door won't open. So, if your Beko washer door gets stuck, then it's most probably due to the drain hose, which is either damaged or loose. To check the drain hose, first, disconnect your Beko washing machine from the power source. Then, access the drain hose and make sure it is properly tightened in its place. Also, check it for any clogs or obstructions. The door latch switch on the Beko washing machine is designed to prevent the door from opening during the wash cycle. If this switch malfunctions during the cycle, your washing machine door might get locked. The door latch or lid switch is located beneath the control board. So if your Beko washer is under warranty, do not try to test it yourself, as it will void its warranty. Even if your washer warranty period is over, I'd recommend seeking a professional help to test or replace the door latch switch on your Beko washer. If your Beko washing machine is automatic or semi-automatic, its functions depend on the timer. The timer may be displaced due to normal wear and tear if your Beko washer is old. When the timer on your Beko washer is faulty or displaced, it will prevent the door from unlocking after the wash cycle is completed. Testing and replacing the washing machine timer is not something I'd recommend doing yourself, so always seek professional help. When your Beko washing machine door gets locked, try following fixes to unlock/open it: Reset your washing machine Disable child lock Inspect and tighten drain hose Check the door lid switch Check the washer timer Was this page helpful?