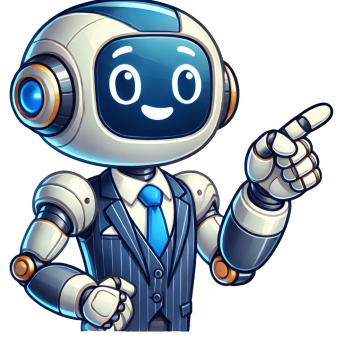


Continue





































WARNING: Do not smoke or place hot objects near fuel.WARNING: Always turn off the engine before refuelling.WARNING: Always stop the engine and let it cool down for a few minutes before refuelling. WARNING: Mix and pour fuel outdoors, where there are no sparks or flames.WARNING: When refuelling, open the fuel cap slowly so that any access pressure is released gently. WARNING: Tighten the fuel cap carefully after refuelling.WARNING: Always move the product away from the refuelling area and source before starting.Tips for properly mixing fuel for grass trimmers and brushcutters:Always mix the fuel and oil in a clean container that is intended for fuel.Always start by filling the container with half the amount of the fuel to be used, add the entire amount of oil, mix (agitate) the fuel mixture, then add the remaining amount of gasoline.Do not mix more than one month's supply of fuel at a time.Mix the fuel mixture thoroughly before filling the machine's fuel tank.Mix the correct ratio as specified by the manufacturer.To find the fuel mix ratio, please refer to the operator's manual for your product.Fuel and oil mixture should always be 2% (50:1). We recommend that you use Husqvarna oil mixtures.Was this article helpful?Read more aboutgrass trimmerfuel and oilbrushcutterpetrol-powered Mixing 2-stroke fuel is a process which confuses many people, but is actually incredibly simple if done the right way. With so many machines powered by 2-stroke fuel, especially garden equipment, knowing how to correctly mix it is essential. Your first step should always be to refer to your user manual to find out what the required ratio of fuel and oil is for the machine in question. For many machines you will have a choice between 25:1 with mineral oil, or 40:1 with semi-synthetic oil. For the purpose of this article, we'll use semi-synthetic oil.Green liquid was used to easily highlight the bottle markings in this photo. 2-stroke fuel should not be green. So what does 40:1 mean? It's simply 40 parts of fresh, unleaded fuel with 1 part of semi-synthetic 2 stroke oil. Although that might sound hard to measure, it's actually an extremely simple process. Mixing should ALWAYS be done externally from the machine.You should NEVER try to mix a 2-stroke fuel in the fuel tank of a machine. The best tool for the job is a fuel measuring bottle, which is sometimes supplied free with your machine. The marks on a measuring bottle will make it simple for you to see which lines you need to pour both fluids up to. Simply find the ratio which is correct for your machine, which in this case is 40:1, and pour the petrol up to the first marker, and the oil up to the second. It's that simple! Your mixture is now ready and safe to pour in to the fuel tank of your machine. You can browse our full range of chainsaws here, and if you have any questions please don't hesitate to contact us on 01437 700123. Want a well-manicured garden? Don't we all! This look would be impossible without your petrol strimmer keeping the weeds out of your way and the lawn edging crisp. But to use it, you've got to know how to start it. This article takes you through cold-starting your petrol strimmer and firing it up when it's warm, too! How to Start a Petrol Strimmer – Cold Start 8 straightforward steps. That's all it takes to get your petrol strimmer going. Follow these, and you can't go wrong! 1. Mix Fuel Funnily enough, a petrol strimmer won't work without fuel. But it's not just petrol that the strimmer requires. You'll need to mix unleaded petrol with semi-synthetic 2-stroke oil at a ratio of 40:1. Your petrol strimmer should have come with a lidded measuring jug. You'll likely find guidelines on the side, so use these for reference! Put the lid back on the jug and give it a good shake. 2. Fuel Up! Fuel up your strimmer with your pre-mixed fuel. Take off your strimmer's fuel cap and pour your mix in. The tank should end up being ¾ full. No more, no less. 3. It's Time to Prime Press down on the priming bulb between 5 and 8 times. You'll require fewer starter cord pulls to start the strimmer after this. Fuel should be travelling into the priming bulb at this point. If it's not, there's a problem. Check the troubleshooting tips further into the article for guidance. 4. Turn it On Now, it's time to turn it on. Reposition the switch so it's on the "On" setting. This may appear as an "I" on some trimmers. 5. Give it Some Throttle The next thing to reposition is the choke. Change this to the "Start" position and squeeze the throttle lever. Only do this once! 6. Get Your Strimmer in a Sturdy Position Before you even think about moving onto the pull-start, you'll want to place your strimmer on the ground in a sturdy position. Ensure the pull-start is facing you and the cutting area isn't making contact with anything. 7. Pull Start Then, place your left hand on the strimmer neck and use your right to grab hold of the pull start. Gently bring the pull start towards you until you feel resistance, then tug hard 3 – 5 times until the engine starts to roar. The best way to start up your strimmer is using a vertical pulling motion. Keep the rope taut, not letting any slack touch the strimmer casing. 8. Increase the Airflow Increase the airflow into your strimmer by moving the choke to "Run" or "Open." Press down on the throttle a little, then leave it to run for around 40 seconds. Now, it's time to get strimming! What To Do if the Strimmer Doesn't Start Ok, so you've followed the instructions precisely, but your strimmer is sitting there silent. There are 5 things you can do to check the condition of your petrol strimmer. Measuring your fuel mix wrong is an easy mistake to make. In fact, it's the most common blunder. Did you definitely add 40 parts unleaded to 1 part 2-stroke oil? If there's no mistake there, consider the age of your petrol. It should be less than 6 weeks old. Your petrol strimmer won't like stale fuel. There's a delicate balance between fuel and air. This balance needs to be maintained for the strimmer to work. You can tell if the balance is wrong because the start is slow. It doesn't have its usual roar! Find your strimmer's adjustment screw, then turn it as far clockwise as possible. Rewind it 1.5 – 2 turns, and try the starting process again. If it still has no life, check that the engine isn't flooded. This happens if you pull the start mechanism too many times. Don't worry, there's an easy solution. Just check the spark plug isn't damp. Take the spark plug out and let some of the fuel evaporate if you suspect it's flooded. Put the plug back, then try the start process again. Expose the spark plug by taking off the top cover. Take out your spanner and remove the spark plug wire and the spark plug itself. Then, holding the spark plug's boot end, tap its electrode tip onto a metal surface. Switch your strimmer on if it's not already, and yank the pull start with your spare hand. The spark plug will produce blue sparks if it's in good working order. The tank filter can sometimes stop fuel from travelling into the engine. Check there's fuel in the priming bulb. If not, open your strimmer's fuel tank and reposition the fuel filter, so it's not as close to the neck of the tank. Then, try to start your strimmer again. If you're still struggling to fire up your strimmer, it's time to call in an expert. How to Start a Petrol Strimmer – Warm Start You've already got past the cold start stage, and you've had your strimmer up and running. You've switched it off momentarily, but now you're ready to continue. Firing up your petrol strimmer from warm is easy peasy. Even a child could do it - although I wouldn't recommend it! Just position the Start/Stop switch to "Start", place the choke on "Run", then yank the starter cord. Once the motor is running, you're good to go! Let's Get Strimming! You've almost achieved that pristine garden you've always wanted. If you're starting your petrol strimmer from cold, follow the 8 easy steps above, and use the troubleshooting guide if it's not playing ball. If you've already got your strimmer going, what are you waiting for? Perform a warm start, and keep up the good work! It's important to power your grass trimmer or brush cutter with a two stroke fuel mixture made to the right recipe: unsuitable fuels and the wrong mix ratios can cause serious damage, leading to piston seizure, excessive wear, and ultimately a shorter lifespan for your grass trimmer. The two stroke fuel mix ratio you need to remember when making up grass trimmer fuel mixture is: When using STIHL two stroke engine oil 1:50 = 1 part oil + 50 parts petrol When using other products Any two-stroke oil you use in your grass trimmer must have the TC classification, and you can use the same ratio for your fuel mixture as with the STIHL engine oil: 1:50 = 1 part oil + 50 parts petrol (20ml per Litre of petrol) You can achieve a fuel mix ratio of 1:50 with 1L of petrol and 20ml of oil or 5L of petrol and 100 ml of oil. The petrol in your grass trimmer fuel mixture needs a minimum octane rating of 90 RON; the petrol that is widely available at AUS petrol stations is unleaded and rated at 91/95/98 RON, which is better for users' health and the environment too. Use high-quality fuel for best performance. You should only use high-quality oil for 2-stroke engines that meets the requirements for TC classification. We recommend STIHL 2-stroke engine oil, which is specially formulated for STIHL tools and will prolong the life of your grass trimmer. Caution: Inferior products can damage the engine, sealing rings and fuel tank of your trimmer. Information on mixing: Make up your grass trimmer fuel mixture in a vessel that is approved for use with fuels - STIHL sells a 5L metal fuel can that is AS/NZS certified which is ideal. Pour in the oil first, followed by the petrol; seal the canister and give it a good shake to combine the fuel mixture. Now you're ready to use the fuel mixture in your grass trimmer or brush cutter tank. Take care as you open the canister, in case pressure has built up inside. Using unsuitable fuel or an inappropriate mix ratio could damage your grass trimmer. The easy way to give your STIHL tools the best treatment is by opting for STIHL MotoMix fuel, a premixed fuel mixture that contains no ethanol, is specially formulated for our tools and guarantees high performance and a long service life. Using the rightgrass trimmer fuel mixture protects your grass trimmer from damage such as piston seizure We recommend using STIHL 1:50 2-stroke engine oil with petrol, at a mix ratio of 1:50 - 1 part oil to 50 parts of petrol If you're using a different brand of oil, make sure it has the TC classification. The same mix ratio of 1:50 applies STIHL MotoMix is perfect for your petrol grass trimmer - it's an ideal fuel mixture that is already blended and specially formulated for the engine. It creates low emissions with high performance and boasts a long shelf life It's important to power your grass trimmer or brush cutter with the correct fuel mixture. Unsuitable fuels and the wrong mix ratios can cause serious damage, leading to piston seizure, excessive wear, and ultimately a shorter lifespan for your grass trimmer. The mix ratio you need to remember when making up 2-stroke fuel for your trimmer is: STIHL 2-stroke engine oil 1:50 = 1 part oil + 50 parts petrol Third party TC 2-stroke engine oil Any other two-stroke oil you use in your grass trimmer must have the TC classification and be in accordance with JASO FB, JASO FC, JASO FD, ISO-L-EGB, ISO-L-EGC or ISO-LEGD. Use the same ratio for your fuel mixture as with the STIHL engine oil: 1:50 = 1 part oil + 50 parts petrol You can achieve a fuel mix ratio of 1:50 with 5 l of petrol and 0.1 l (100 ml) of oil. STIHL two-stroke oil. The petrol in your grass trimmer fuel mixture needs a minimum octane rating of 90 RON; the petrol that is widely available at UK petrol stations is unleaded and rated at 95/97/98 RON, which is better for users' health and the environment too. Use high-quality fuel for best performance. You should only use high-quality oil for 2-stroke engines, that meets the requirements for TC classification. We recommend STIHL 2-stroke engine oil, which is specially formulated for STIHL tools and will prolong the life of your grass trimmer. Caution: Inferior products can damage the engine, sealing rings and fuel tank of your trimmer. Information on mixing: Make up your grass trimmer fuel mixture in a vessel that is approved for use with fuels - STIHL sells combination canisters that are ideal. Pour in the oil first, followed by the petrol; seal the canister and give it a good shake to combine the fuel mixture. Now you're ready to use the fuel mixture in your grass trimmer or brush cutter tank. Take care as you open the canister, in case pressure has built up inside. Using unsuitable fuel or an inappropriate mix ratio could damage your grass trimmer. The easy way to give your STIHL tools the best treatment is by opting for STIHL MotoMix fuel, a premixed fuel mixture that contains no ethanol, is specially formulated for our tools and guarantees high performance and a long service life. Contact your dealer directly if you have any questions. Using the right fuel mixture in your grass trimmer protects it from damage such as piston seizure. Use a mix ratio of 1:50 - 1 part oil to 50 parts of petrol. If you're using a different brand of oil, make sure it has the TC classification. The same mix ratio of 1:50 applies. STIHL MotoMix is perfect for your petrol grass trimmer - it's an ideal fuel mixture that is already blended and specially formulated for the engine. It creates low emissions with high performance and boasts a long shelf life. If you've recently purchased a new brushcutter, or you're borrowing one from a friend, fuelling it for the first time can be daunting. This how-to guide is to help you correctly fuel a petrol-powered brushcutter which will require a mixture of petrol and engine oil - the quality of both of these is critical to maintaining the efficient running and the life of the engine. Using unsuitable fuels or incorrect ratios can cause serious damage to the engine including piston seizing and excessive wear so please follow the below instructions very carefully. If in doubt, you can call our product specialists (Monday-Friday 7am-5pm) who will be more than happy to offer advice. Before filling up your strimmer, there are a few points you should consider for safety reasons. Petrol is extremely flammable so ensure you are not fuelling near naked flames. Also take extra care to not spill any fuel. You should ideally fuel your machine at least 3m away from the area where you will be starting it up. The engine must be switched off completely before refuelling. Also make sure the engine has cooled down before filling up. When opening the tank cap, be sure to open it carefully to allow excess pressure to escape slowly so fuel does not spray out of the tank. Only fuel up in a well-ventilated area. When fuelling take extra care not to spill any on the ground or on yourself. If that happens, you should clean it up immediately. The recommended ratio of fuel mix is 1 part oil to 50 parts petrol. For example, if you are using 5L of petrol, you will need 0.1L (100ml) of 2 Stroke Oil. To mix the fuel, pour the 2 Stroke engine oil into a mixing can that is approved for use with fuel, then add the petrol. Combine the mixture thoroughly by shaking the can. Be sure to take care when opening the can as pressure may have built up inside. You can now pour the fuel mix into the fuel tank using the steps details below. \*See the bottom of this blog post for our range of 2 Stroke oils\* Place the brushcutter down on a clean and flat surface. Lay it with the tank opening facing upwards. If there is build up around the tank opening, wipe it away with a clean cloth. Raise the tank cap flap then turn the cap anti-clockwise as far as it will go and remove the cap. Slowly and carefully fill the tank with the fuel mix, taking care not to spill any. Place the filler cap back into position and turn clockwise until it stops and fold the cliplock down. This will help to reduce the risk of unit vibrations causing an incorrectly tightened cap to loosen or come off and spill fuel. Look carefully for leaks - if there is a leak do not start the engine. This is a serious fire hazard and could cause danger to life. We have three ranges of 2 Stroke Oil available. Standard Mineral Oil This is a great cost-effective oil, suitable for all types of two stroke engines. HLU0086 - Stihl 100ml 'one shot' HLU0009 - Stihl 1L HLU0019 - Morris Lubricants Universal 5L Super Semi Synthetic Oil This is a high spec oil for added engine performance and protection. HLU0099 - Stihl 100ml 'one shot' HLU0757 - Morris Lubricants 100ml 'one shot' HLU0740 - Morris Lubricants 1L HLU0741 - Morris Lubricants 4L HLU0742 - Morris Lubricants 25L Husqvarna Oil Guard This unique oil is specifically for use with the Husqvarna petrol saws that feature the Oil Guard System. HLU0005 - Husqvarna 100ml 'One shot' Click here to browse the full range online \*All images from www.stihl.co.uk Garden Machinery For Keeping Your Paths and Garden Tidy Whether you want to keep your driveway or pavement tidy, a power sweeper is an excellent choice for taking the hassle out of sweeping. Generally, they will sweep up 6x faster than doing it manually and they are ideal for removing sand and rock salt from lawns and quickly picking up grass, leaves and other garden debris. Additionally, you may want to consider investing in a decent leaf blower. Leaf blowers will save you time and the physical effort it takes to use a rake. Flail Mowers For Cutting Heavier Grass And Scrub What a lawn mower can't handle, a flail mower does. A flail mower is an ideal compact tractor attachment and if you have a large garden with heavy grass or scrub then it's an essential piece of garden machinery. Flail mowers comprise of many small pieces of metal, or flails, which are attached to a rotating drum. As the drum rotates, hundreds of flails thresh at the stubborn grass and scrub, making quick work of what would normally be a difficult job. Compact Tractor Attachments For Landscaping Turn your tractor into an excellent landscaping tool by adding a compact tractor rake. Thatch rakes are incredibly strong and can break up big lumps of soil in addition to quickly slicing through the roots of weeds and pulling them out. Summary You can take much of the hard work out of managing and maintaining your garden with the correct garden machinery. These include numerous compact tractor attachments which are designed to take full advantage of your compact tractors PTO power source. If you there's anything on our website that you see and want to ask us anything about, please call us on 01673 828 965. It's important to power your grass trimmer or brush cutter with a fuel mixture made to the right recipe: unsuitable fuels and the wrong mix ratios can cause serious damage, leading to piston seizure, excessive wear, and ultimately a shorter lifespan for your grass trimmer. The mix ratio you need to remember when making up fuel mixture for your trimmer is: How to mix 2 stroke fuel for weed eater 1:50 = 1 part oil + 50 parts gas When using other products Any two-stroke oil you use in your grass trimmer must have the TC classification, and you can use the same ratio for your fuel mixture as with the STIHL engine oil: 1:50 = 1 part oil + 50 parts gas You can achieve a fuel mix ratio of 1:50 with 5 l of petrol and 0.1 l (100 ml) of oil. The petrol in your grass trimmer fuel mixture needs a minimum octane rating of 90 RON; the gas that is widely available at UK petrol stations is unleaded and rated at RON, which is better for users' health and the environment too. Use high-quality fuel for best performance. You should only use high-quality oil for 2-stroke engines, that meets the requirements for TC classification. We recommend STIHL 2-stroke engine oil, which is specially formulated for STIHL tools and will prolong the life of your grass trimmer. Caution: Inferior products can damage the engine, sealing rings and fuel tank of your trimmer. Information on mixing: Make up your grass trimmer fuel mixture in a vessel that is approved for use with fuels - STIHL sells combination canisters that are ideal. Pour in the oil first, followed by the petrol; seal the canister and give it a good shake to combine the fuel mixture. Now you're ready to use the fuel mixture in your grass trimmer or brush cutter tank. Take care as you open the canister, in case pressure has built up inside. Using unsuitable fuel or an inappropriate mix ratio could damage your grass trimmer. The easy way to give your STIHL tools the best treatment is by opting for STIHL MotoMix fuel, a premixed fuel mixture that contains no ethanol, is specially formulated for our tools and guarantees high performance and a long service life. Using the right fuel mixture in your grass trimmer protects it from damage such as piston seizure We recommend using STIHL 1:50 2-stroke engine oil with gas, at a mix ratio of 1:50 - 1 part oil to 50 parts of petrol If you're using a different brand of oil, make sure it has the TC classification. The same mix ratio of 1:50 applies STIHL MotoMix is perfect for your petrol grass trimmer - it's an ideal fuel mixture that is already blended and specially formulated for the engine. It creates low emissions with high performance and boasts a long shelf life Ensure the longevity and efficiency of your petrol grass trimmer or brush cutter by using the correct fuel mixture. Learn about the importance of mix ratios and how they impact the performance and lifespan of your tools.Using the correct fuel mixture is crucial for maintaining the health of your grass trimmer or brush cutter. Incorrect mix ratios or unsuitable fuels can lead to severe damage, including piston seizure and excessive wear, ultimately shortening the lifespan of your equipment. Remember the essential mix ratio for 2-stroke fuel:STIHL 2-stroke engine oil:1 part oil to 50 parts petrol (1:50 ratio)Achieving the correct fuel mix ratio is essential. For example, to create a 1:50 ratio, mix 5 litres of petrol with 0.1 litres (100 ml) of oil.Select high-quality petrol with a minimum octane rating of 90 RON for your grass trimmer fuel mixture. Opting for unleaded petrol with ratings of 95/97/98 RON, widely available at UK petrol stations, enhances performance and promotes environmental and user health.For optimal results, use only high-quality engine oil designed for 2-stroke engines that meet TC classification standards. STIHL 2-stroke engine oil is recommended for its compatibility with STIHL tools and its ability to prolong the life of your grass trimmer.\*\*Caution:\*\* Inferior engine oil products can cause damage to the engine, sealing rings, and fuel tank of your trimmer.When preparing your fuel mixture, ensure you use a vessel approved for use with fuels. STIHL combination canisters are ideal for this purpose. Follow these steps:1. Pour the oil into the canister first, followed by the petrol.2. Seal the canister and shake it thoroughly to combine the fuel mixture.3. Exercise caution when opening the canister to release any built-up pressure.For further guidance on fuel mixtures for your grass trimmer or brush cutter, contact Crawfords today. Our experts can provide insights and recommendations to optimise the performance and longevity of your equipment. Don't compromise on efficiency – ensure your tools are fuelled correctly for maximum effectiveness.