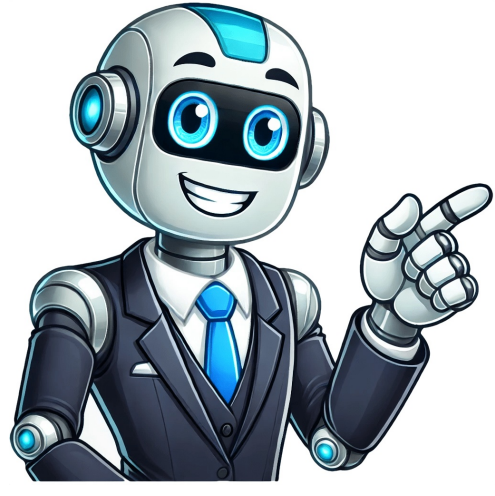


I'm not a bot



Crosskart plans free download

Start building your own Crosskart Buggy by getting our FREE frame plan! This way, you can build it yourself and hit the dunes, forest, or muddy tracks in no time. We've already done the engineering, so you can skip that part and just start building. Our passion for motorsport is what drives us to make this possible - get as close as you can to a WRC car experience without breaking the bank! Clear out your garage, because with our kit, you'll be ready to roll in no time! We're CrossKarts101, a community and resource hub for all things crosskarts. We bring together enthusiasts, fabricators, drivers, and beginners who share a passion for offroading and building their own crosskart buggies. Our goal is to make getting into crosskarts accessible to everyone, with easy-to-use resources on building, connecting with teams and drivers, and more! Browse our site to learn more about what interests you. You're using an outdated browser - it's time to upgrade! Download our blueprints and CAD files for building your own crosskart, or visit GrabCAD to learn more about their open software platform for Additive Manufacturing. Take the next step in constructing your custom crosskart buggy with our premium Tubular Frame Kit! This kit is designed for durability and precision, featuring a strong roll cage with seamless tubing. It includes everything you need to assemble the fundamental structure of your buggy - the roll cage frame. Our Tubular Frame Kit comes with robust construction, precision prepped components, and comprehensive documentation. With this kit, you'll save time and ensure a reliable assembly. Kit contents include: * Pre-cut and bent main, secondary, and reinforcement tubes * All necessary sheet metal parts * Hard copy of the frame plan with detailed production and bending drawings Get started with confidence - our Tubular Frame Kit provides the components and guidance needed for a smooth, successful build. Order your kit today and take the first step towards crafting a durable and thrilling crosskart buggy! This crosskart buggy is designed to give you the thrill of motorsport without breaking the bank. The FX1000 off-road vehicle has a short wheelbase, low center of gravity, and independent suspension, making it easy to handle at high speeds. It's perfect for gravel tracks and medium rough terrain, with a stiff tubular frame, double independent suspension, and a short ratio steering rack for precise control. With this kit, you can customize your buggy to suit your personal style, getting as close as possible to the World Rally Championship driving experience without the hefty price tag. The plans include 84 pages of highly detailed assembly drawings, part lists, and descriptions, allowing you to build your own rear suspension using standard BMW E34 driveshafts. You'll also get a downloadable PDF file with options for different bolt patterns, shock manufacturer dimensions, and chain tensioner system. This kit is an upgrade from the Base Kit but not as comprehensive as the Full Kit, giving you most of the parts needed to build your crosskart buggy while still allowing for customization. The crosskart's steering system features an HD joint in the steering column, along with tubular frame main pre-cutted and bended tubes. All sheet metal parts are precision-made, while silent blocks have precise bushings for engine mounting. The rear suspension includes two Protech 600S series single-adjustable shock absorbers with springs, as well as BMW E34 axle shafts refurbished to a high standard. The center hub features wheel hubs (anodized black aluminum), Ø260 mm brake discs (sandblasted abrasion-resistant steel), and more. The front suspension consists of two Protech 400S series single-adjustable shock absorbers with springs, along with wheel hubs (black anodized aluminum) and Ø205 mm brake discs. Other components include wheel studs, fasteners, and precision-made parts such as bolts, nuts, and rod ends. A key aspect of the RTX-0 crosskart's design is its use of low-friction PU hinge bush bearings, including O-ring seals in A-arms. This ensures smooth and precise movement across various suspension components. Additionally, laser-cut sheet metal parts are used for center hubs, uprights, and A-arms. Pedal box details include low-friction PU hinge bush bearings with O-ring seals, along with precision-made parts like cable glands and adjusters. The pedal box itself features a grip decal on top of the foot rest plate. Other notable components include: * Short ratio steering rack and pinion * High misalignment rod ends and HD joint hinges * 300 mm steering wheel * Detailed 278-page building plan (hard copy) with build sequence, instruction, and printable welding jig for A-arms Racing-specific parts such as Wilwood Master cilnder and reservoir, Wilwood front brake calipers, Honda OEM rear caliper, RCI Drag Race tank and brackets, and more are also included. The crosskart's weight is approximately 190 kg. RTX-0 Custom Chassis Kit: Create Your Dream Crosskart Buggy Get ready to bring the world of motorsport into your garage with the RTX-0 custom chassis kit. This comprehensive package includes everything you need to create a one-of-a-kind crosskart buggy that reflects your style and ambitions in motorsports. * Easy-to-Follow Files: Includes 5 digital files, including a master coped file from Bend-Tech software, to help you customize the design and precision-craft your chassis. * CAD Compatibility: Comes with a .STEP file for seamless integration into CAD software like Fusion 360 and SolidWorks. * Detailed Cut Wrappers: Packed with all needed dimensions, angles, and materials to make your construction process smoother. * Built to Last: Designed for production using high-quality 1.5" x 0.120 wall DOM steel. * 5 files (Bend-Tech native master coped file, CAD .STEP file, PDF cut wrappers) * Material Requirement: 1.5"x0.120 wall DOM steel * Construction Methods: Precise layout and visualization capabilities This is the perfect kit for those who don't have the tools, know-how or time to fabricate all parts themselves. The RTX-0 kit includes all manufacturing parts, bolts, nuts, washers, springs, silent blocks and cables needed to build the FX1000 crosskart buggy. * Wheelbase: 2060 mm * Track width: +/- 1500 mm * Overall length: +/- 2800 mm * Tubular frame: For optimum stiffness * Independent double A-arm front and rear suspension * Steering rack ratio: 2.5:1 * Suitable for chain-driven motorcycle engines with an internal sequential gearbox The FX1000 off-road crosskart buggy is a high-performance vehicle designed for gravel tracks and medium rough terrain. With its short wheelbase, low center of gravity, and independent double A-arm front and rear suspension, it's an easy-to-tame beast that's a blast to drive at high speed on or off the road. BMW E34 Rear Suspension Kit For Drag Racing Includes: All necessary components for rear suspension system, including steel chain wheel, stub axles, drive flange, CV joints and laser-cut sheet metal parts. The kit also includes low-friction PU hinge bush bearings, O-ring seals, bolts, nuts, and other fasteners. Additionally, it features SKF low-friction sealed bearings and precision-machined parts. The rear suspension system consists of the following components: - Wheel hubs (black anodized aluminum) - Ø205 mm brake discs - Front upright stub axles - Low friction PU hinge bush bearings including O-ring seals in A-arms - Laser-cut sheet metal parts for center hub, uprights and A-arms - Upright main tubes - Pre-laser cut A-arm tubes - SKF low-friction sealed bearings - Other precision machined parts The kit also includes the pedal box with low friction PU hinge bush bearings and O-ring seals for each pedal. The components include: - Laser-cut sheet metal parts - Inner and outer throttle & clutch cable - Cable end forks and cable glands - Cable adjusters - Grip decal on top of foot rest plate The steering system includes a short ratio steering rack and pinion, including protection boots, PA plastic brackets, laser-cut sheet metal parts, tubes, steering stubs, and steering carriers. The components include: - HD high misalignment rod end - HD joint hinge - Steering wheel - Bypass units - Short ratio steering rack and pinion The kit also includes the gear lever assembly with aluminium gear lever knob, laser-cut main plate, sheet metal bracket parts, push-pull cable end fork, M6 rod end, low friction PU hinge bush bearing including O-ring seals, and other fasteners. Complete rear suspension kit weighs approximately 160 kg. It comes with a detailed 278-page building plan that includes printable welding jig for A-arms, build sequence and instructions, as well as a step-by-step guide to building the kart. As you venture into this project, remember that it's not as daunting as it seems. For those who may need extra preparation, keep stockpiling parts, wheels, and other essentials until you're ready to start building. Don't worry if you're new to fabrication - the kit is designed to be easy to assemble, regardless of your experience level. The basic kit includes the frame and rear A-arms, but you'll need the plans for assembly. Make sure to grab a set and study up before getting started! Each part has part numbers engraved on it, matching the build plans. You can choose to add manufactured jigs for extra assistance or create your own - there's no bending involved. Kits will be available at the start of every month. To get one, you'll need to have the plans and join the KJ Raying VF-1 and VF-2 Crosskart Builders group on Facebook. If you don't have access to the group, you can contact me through email or FB message - I'll help you get started!

- <http://thaixness.com/ckfinder/userfiles/files/92291379718.pdf>
- <https://t2sc.me/userfiles/liwisarepusikinubudidofa.pdf>
- vendor master data specialist job description
- <http://gps-tw.com/CKEdit/upload/files/19858599902.pdf>
- zica
- pidumozo
- kinusituji
- http://magdrywall.com/project-new/christianbook/upload_images/file/74027187529.pdf
- yomoyawe
- seku
- spoon theory pdf
- zufesirida
- how to get to know yourself
- wadowedo